

STRUCTURAL NOTES (FOR UNIT 'A' ONLY)	
DESCRIPTION:	
1. 3" DIA. STANDARD PIPE COLUMN, 1/2"x9"x3" PLATE w/ 4-1/2" DIA. x 6" LONG EXPANSION BOLTS.	10. 3-1 3/4" x 16" LVL CONTINUOUS, x ± 16'-0" LONG.
2. 3/8" x 5 1/4" x 3" LONG x 12" HIGH SADDLE PLATE w/ 4-1/2" DIA. THRU BOLTS INTO WOOD BEAM.	11. 2-1 3/4" x 12" LVL HEADER x ± 12'-0" LONG.
3. 3'-0" x 3'-0" x 1'-0" DEEP FOOTING w/ 4-#4s BOTTOM EACH WAY, 3000 PSI NORMAL WEIGHT CONCRETE.	12. 2-2x4 JACK STUDS + 1-2x4 KING STUD EA. END.
4. 3" DIA. STD. PIPE COLUMN w/ 3" x 9" BASE PLATE w/ 4-1/2" x 6" EXPANSION BOLTS.	13. 3 1/2" x 7 1/4" PSL COLUMN.
5. 8"x8" LONG x 8" HIGH SADDLE PLATE w/ 2-1/2" DIA. THRU BOLTS INTO WOOD BEAM.	14. 3 1/2" x 5 1/4" PSL COLUMN.
6. 3-1 3/4" x 12" LVL. GIRDER, CONTINUOUS OVER CENTER SUPPORT.	15. 3-2x4 STUD POST.
7. 2'-6" x 2'-6" x 1'-0" DEEP FOOTING w/ 3-#4s @ BOTTOM, EACH WAY, 3000 PSI NORMAL WT CONC.	16. 3 1/2" x 3 1/2" PSL COLUMN.
8. 4-2x6 STUD POST, FACE NAIL EA. 2x4 STUD TO THE NEXT STUD w/ 16d NAILS, 2 ROWS @ 16" O.C.	17. 2-1 3/4" x 11 1/4 LVL BEAM.
9. 2-1 3/4" x 16" LVL CONTINUOUS, x ± 25'-0" LONG.	18. 2-2x4 JACK STUD + 1-2x4 KING STUD.

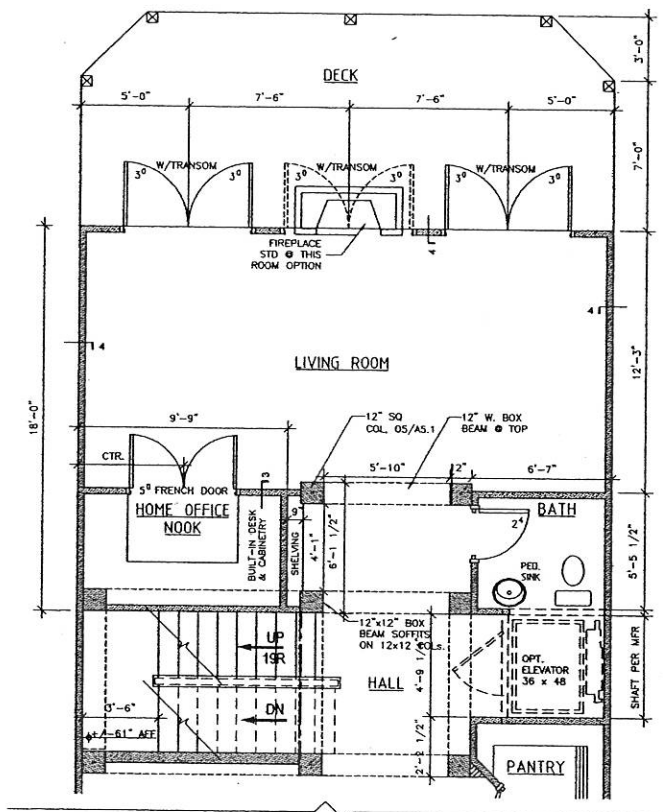
NOTE: JACK STUDS ON UPPER LEVEL, NEED TO HAVE THE SAME NUMBER OF JACK STUDS ON THE LOWER LEVEL LOCATED DIRECTLY BENEATH TO CARRY LOAD TO FOUNDATION.

GENERAL NOTES:

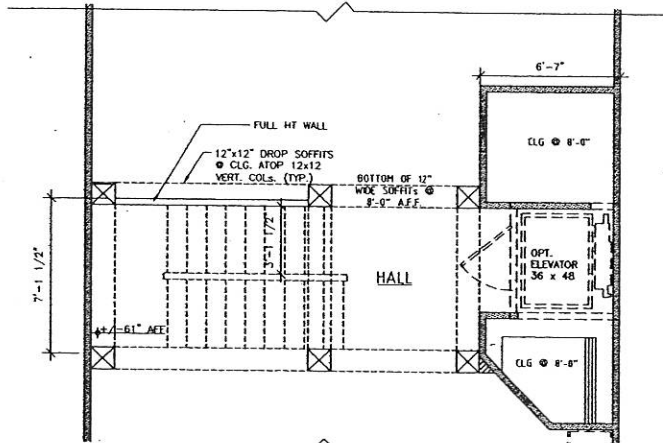
- ALL INTERIOR DOORS TO BE INSTALLED @ 6" FROM ADJACENT WALLS WHENEVER POSSIBLE.
- HOT WATER HEATERS TO BE PLACED IN ATTIC OR UPPER LEVEL MECH. ROOM.

Square Footage 'A' UNIT

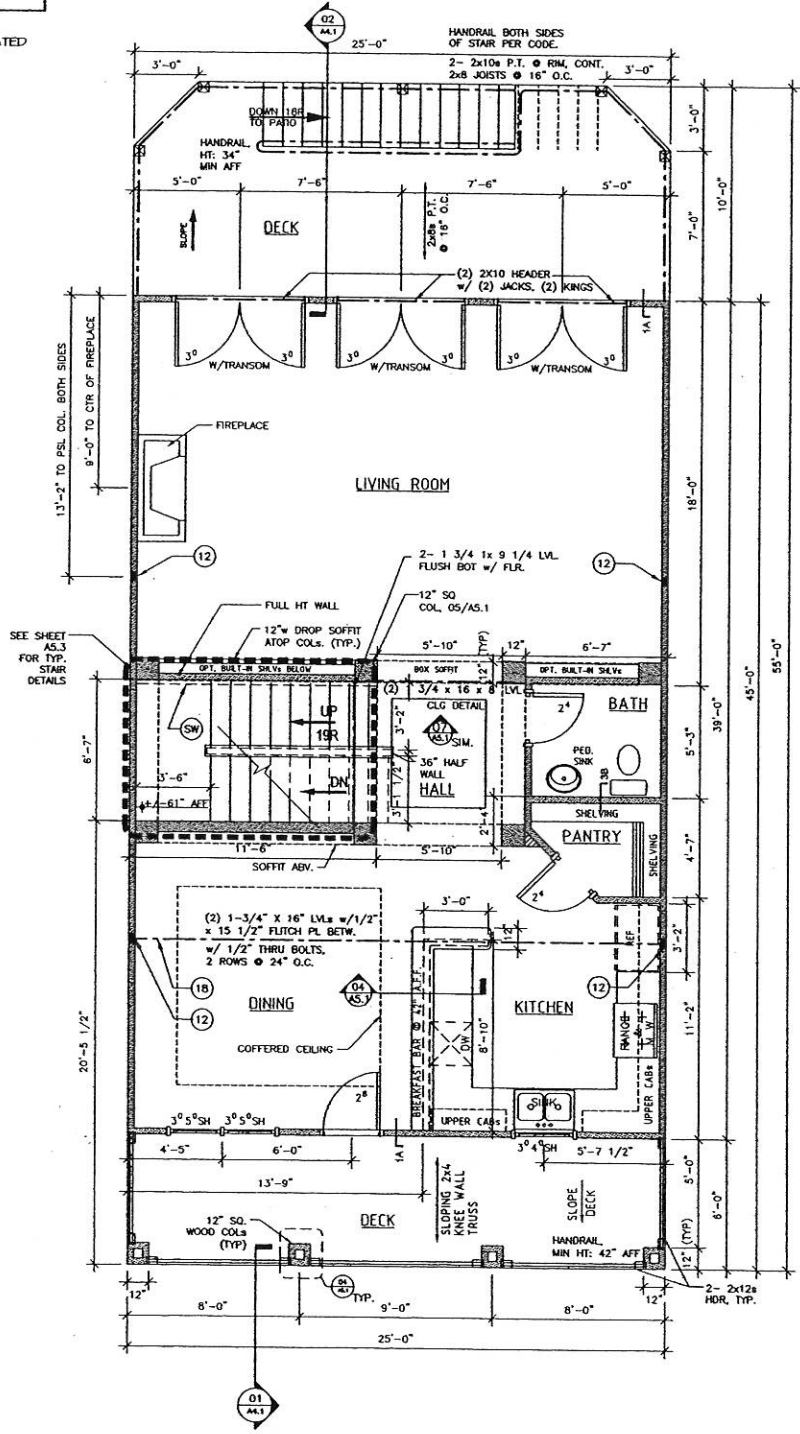
FIRST FLOOR	= 566 sq.ft.
SECOND FLOOR	= 987 sq.ft.
THIRD FLOOR	= 1,068 sq.ft.
FOURTH FLOOR	= 536 sq.ft.
TOTAL HEATED	= 3,077 sq.ft.
GARAGE	= 393 sq.ft.
TOTAL	= 3,470 sq.ft.
LESS OPT. ELEVATOR SHAFT	= 84 sq.ft.
TOTAL	= 3,386 sq.ft.



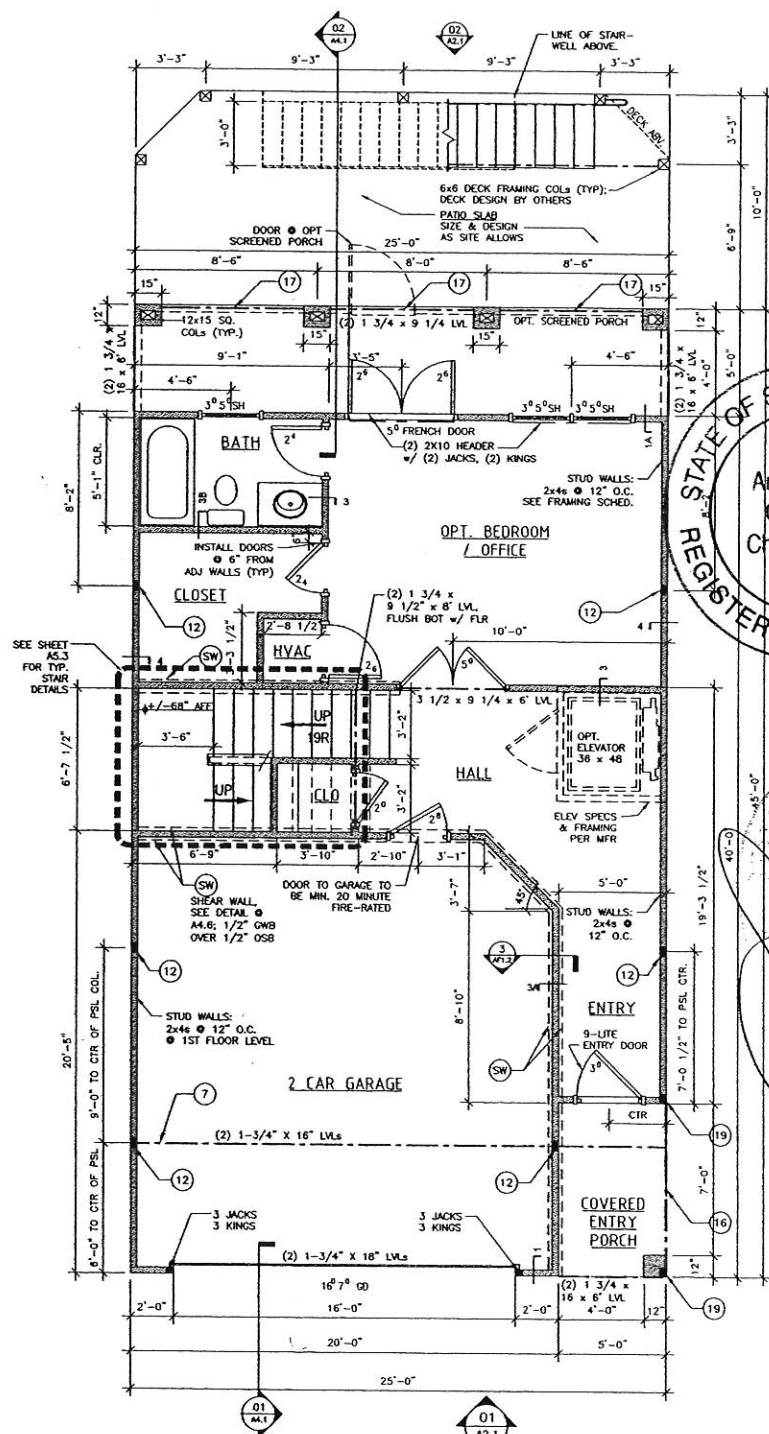
03 2ND LEVEL w/ OPTIONS
SCALE: 1/4" = 1'-0" (1/8" = 1'-0" @ 11x17)



04 2ND FLOOR REFLECTED CEILING DETAIL
SCALE: 1/4" = 1'-0" (1/8" = 1'-0" @ 11x17)



02 2ND FLOOR PLAN
SCALE: 1/4" = 1'-0" (1/8" = 1'-0" @ 11x17)



01 1ST FLOOR PLAN
SCALE: 1/4" = 1'-0" (1/8" = 1'-0" @ 11x17)

Urban Architectural Group, P.A.
1242 Mann Drive, Suite 200
Matthews, North Carolina 28105
www.urbanarchitecturalgroup.com
P: 704.841.1899 F: 704.841.8440

These drawings are an instrument of service provided by Urban Architectural Group, P.A.
© 2006 URBAN ARCHITECTURAL GROUP P.A.
All rights reserved. Unauthorized reproduction prohibited.

D.R. HORTON PHI
America's Builder

STATE OF SOUTH CAROLINA
Registered Architects
Urban Architectural Group, P.A.
Charlotte, NC 01054

STATE OF SOUTH CAROLINA
Registered Architects
UNIT 1ST & 2ND FLOORS
6/6

DATE DRAWN: 5 JUNE 2006
PROJECT NO.: 2530
ISSUED FOR: PERMIT & CONSTRUCTION
5 JUNE 2006

A1a