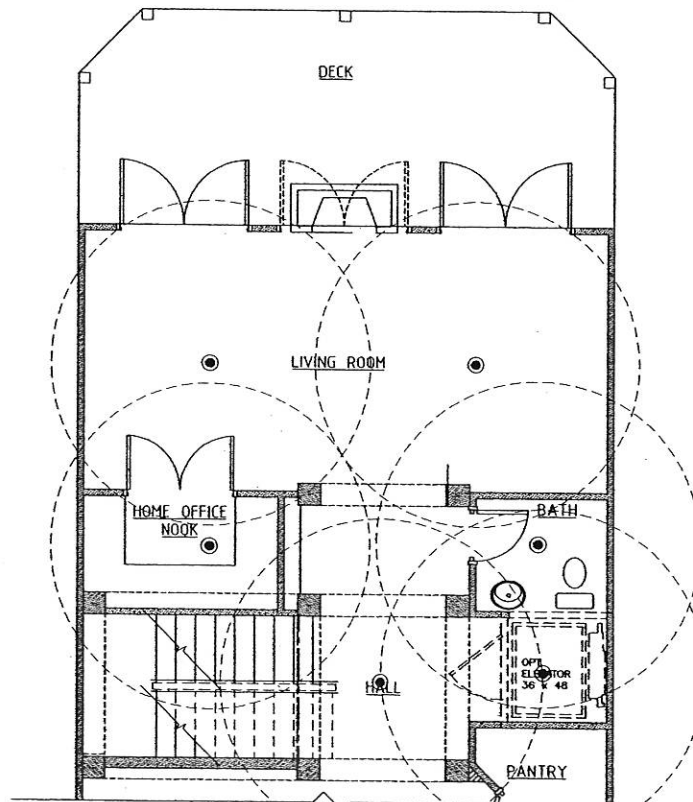
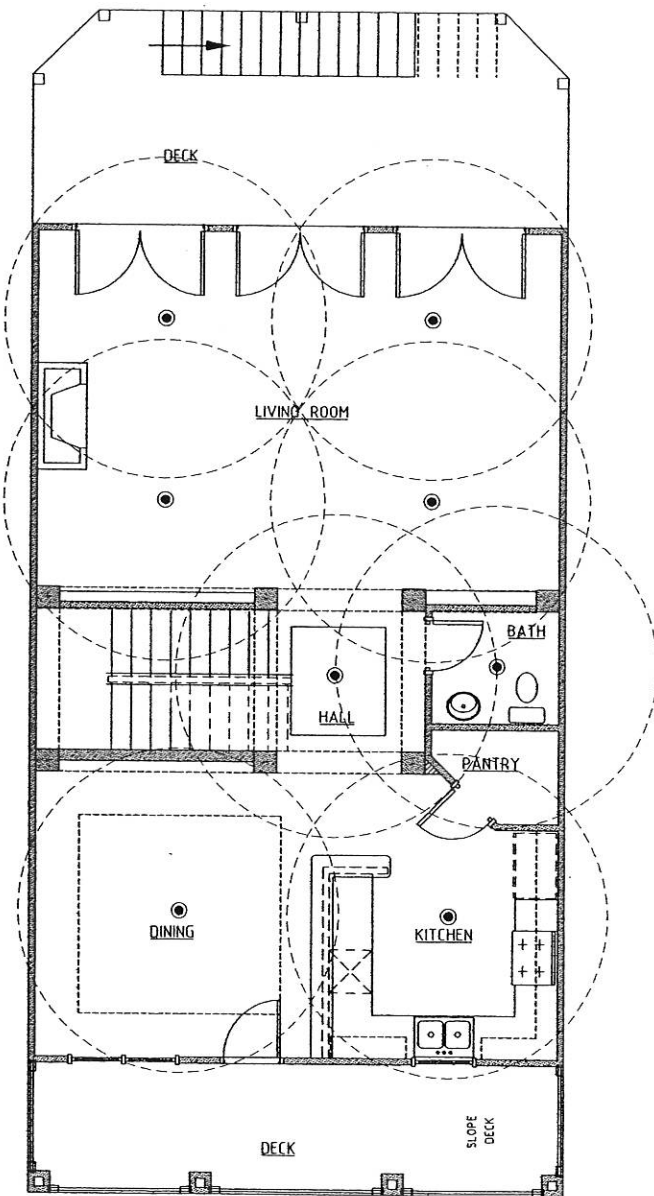


FIRE PROTECTION GENERAL NOTES

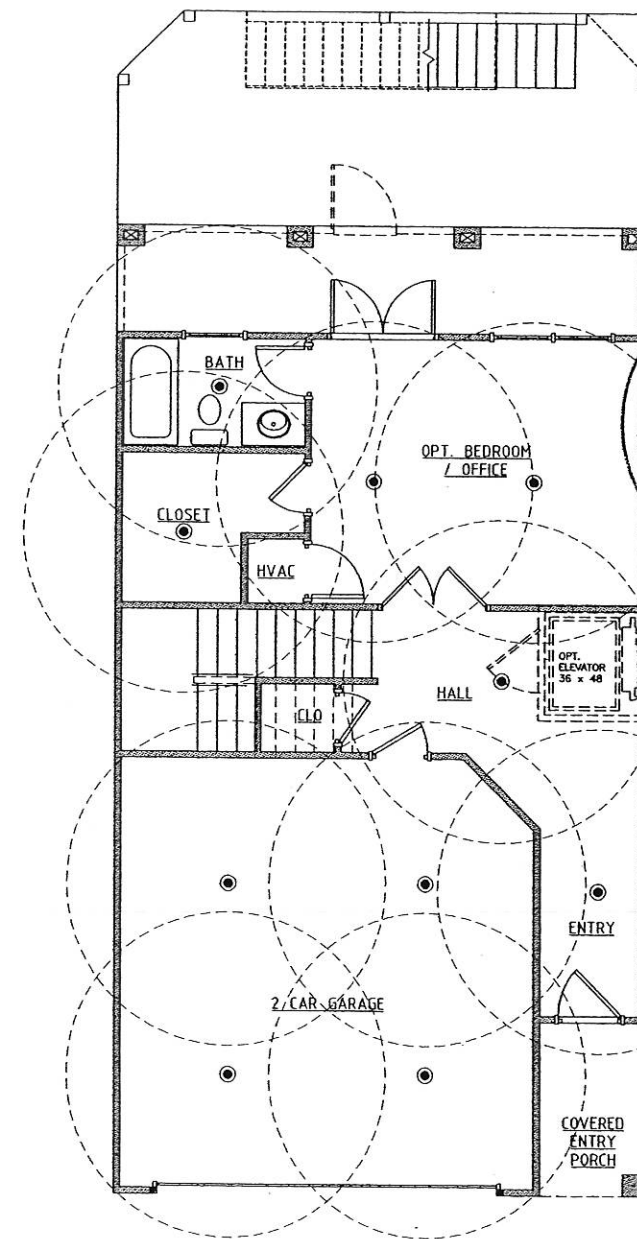
1. THE FIRE PROTECTION OF THIS BUILDING SHALL BE IN ACCORDANCE WITH STATE AND LOCAL CODES AND SHALL CONFORM TO NFPA FIRE REQUIREMENTS AND IN FULL COMPLIANCE WITH LOCAL AMENDMENTS AND COUNTY FIRE ORDINANCE.
2. THE CONTRACTOR SHALL PROVIDE SHOP DRAWINGS OF A FIRE SYSTEM SHOWING COORDINATION WITH ALL STRUCTURAL AND HVAC COMPONENTS.
3. THE CONTRACTOR SHALL PROVIDE HIS OWN HYDRAULICALLY DESIGNED SYSTEM FOR REVIEW AND APPROVAL BY THE LOCAL FIRE MARSHAL'S OFFICE AND PROTECT FOR USE ON THIS PROJECT.
4. SPRINKLER SYSTEM DESIGN SHALL BE BASED ON THE FOLLOWING CRITERIA:
 - A. SPACING OF HEADS: 16'-0" ON CENTER
 - B. TYPE OF PIPE: GREY POLYBUTYLENE, BLACKMASTER, OR APPROVED EQUAL
 - C. TYPE OF PACKING OF THE TIGHT JOINT
 - D. TYPE OF BACKFLOW PREVENTION DUAL CHECK VALVE
 - E. SIZE OF MAIN LINE AT STREET: REFER TO CIVIL DRAWINGS
 - F. SIZE OF BRANCH LINES: 1/2"
 - G. TYPE AND DESIGN OF HEADS USED: VARIOUS MODEL IN RESIDENTIAL, GRADE LEVEL PLATED PENDANT WITH ORANGE ESCAPEMENT PLATES 16"
 - H. PLUMBING INSTALLATION SHALL BE PERFORMED BY THE CONTRACTOR PRIOR TO CALLING FIRE MARSHAL'S OFFICE FOR APPROVAL FOR INSPECTORS PLUMB TEST.
5. HEAD SPACING CRITERIA SHALL BE AS FOLLOWS:
 1. NO MORE THAN 6'-0" OF WALL
 2. NO LESS THAN 6'-0" APART
 3. NO MORE THAN 8'-0" APART
 4. NO LESS THAN 1'-0" FROM THE RANGE HOOD/STOVE
 5. NO LESS THAN 1'-0" IN FRONT OF OR 1'-0" TO THE SIDE OF A RECESSED PRELACE.
6. FOR WATER FLOW DATA SEE CIVIL PLANS.
7. FIRE RETARDANT CONNECTION TO BE MADE OR AS ALLOWED BY LOCAL AUTHORITY DURING INSPECTION.



2ND LEVEL w/ OPTIONS



2ND FLOOR PLAN



1ST FLOOR PLAN

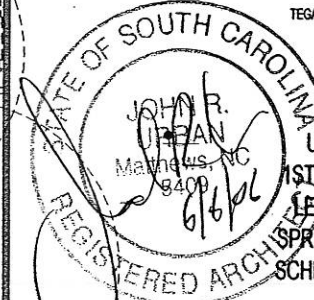


1242 More Drive, Suite 200
 Matthews, North Carolina 28105
 www.urbanarchitecturalgroup.com
 P: 704.841.1899 F: 704.841.8440

These drawings are an instrument of service provided by Urban Architectural Group, P.A.
 © 2006 URBAN ARCHITECTURAL GROUP P.A.
 All rights reserved. Unauthorized reproduction prohibited.



LAKE SHORE TOWN HOMES
 TEGA CAY, SC



UNIT 1ST & 2ND LEVELS
 SPRINKLER SCHEMATIC

DATE DRAWN	5 JUNE 2006
PROJECT NO.	2530
ISSUED FOR:	PERMIT & CONSTRUCTION
DATE	5 JUNE 2006

A1d