

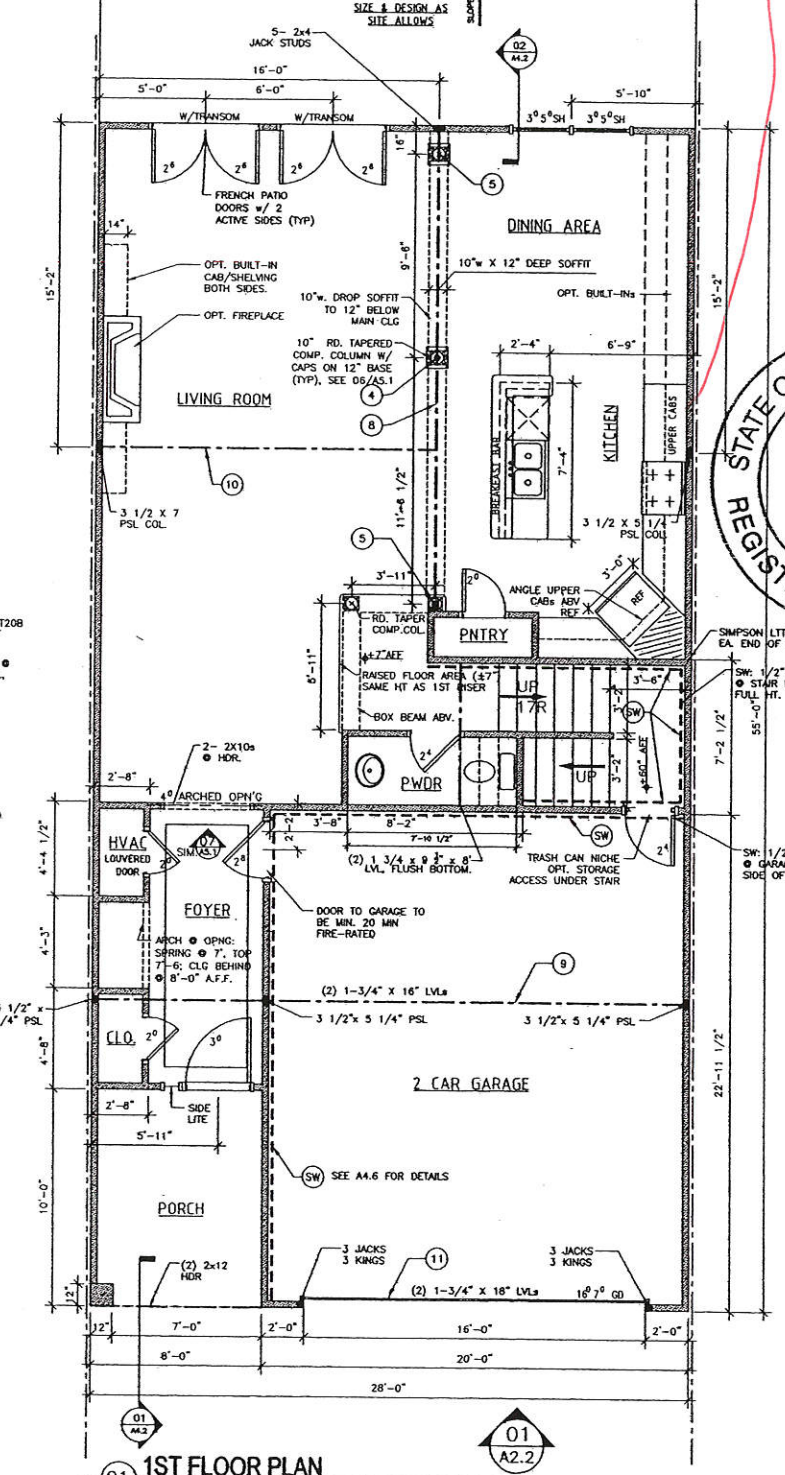
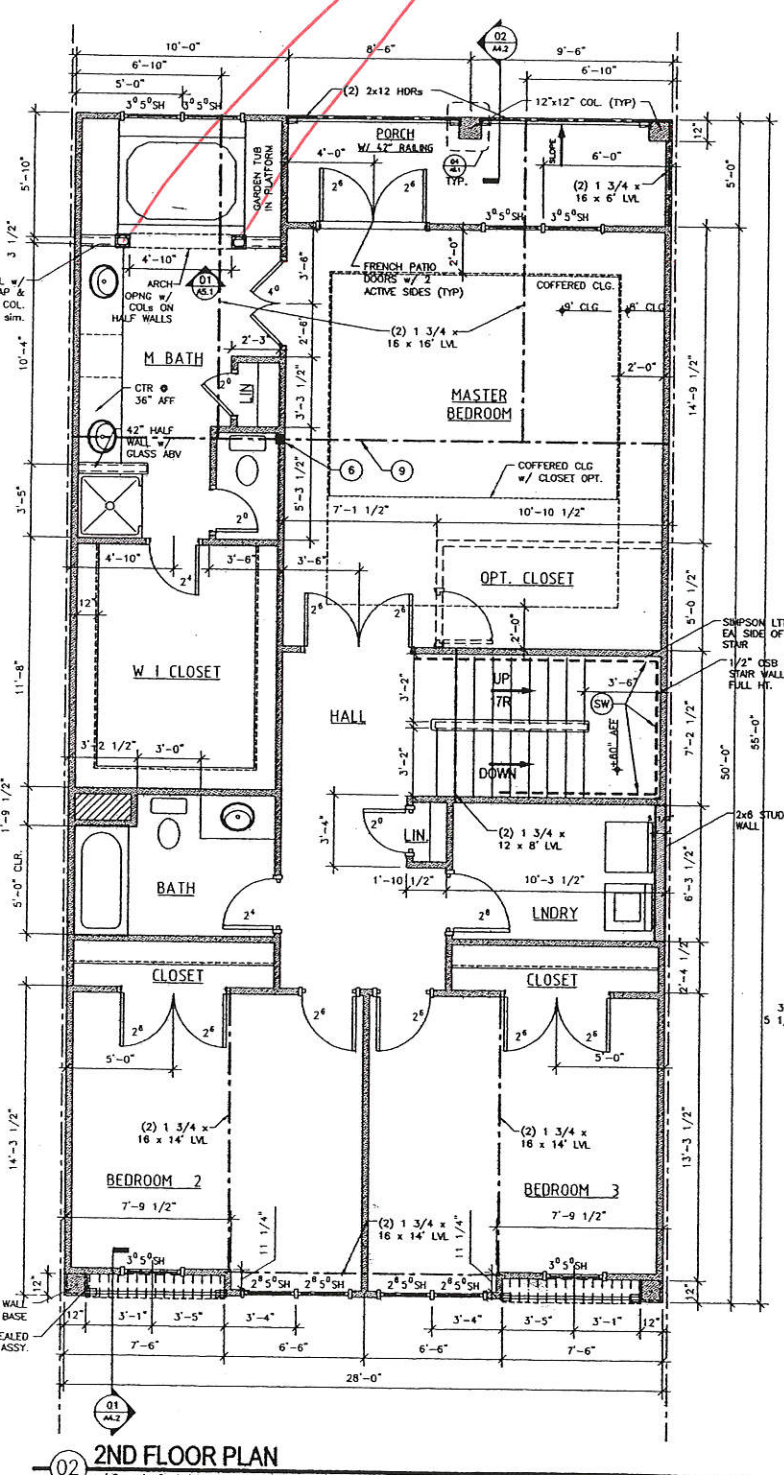
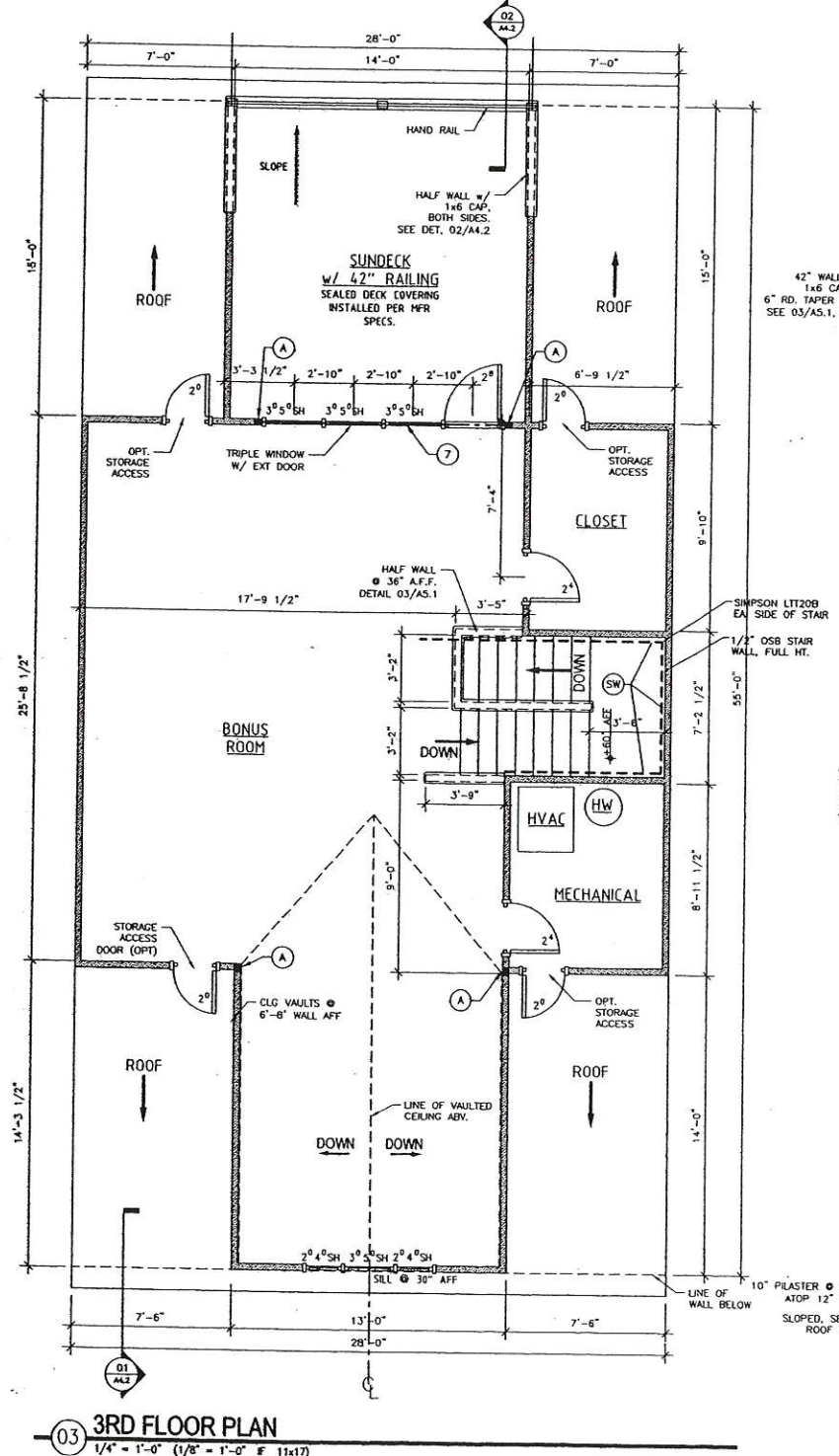
STRUCTURAL NOTES (FOR UNIT 'B' ONLY)	
DESCRIPTION:	
1 2'-6" x 2'-6" x 1'-0" DEEP FOOTING w/ 3- #4s @ BOTTOM, EACH WAY, 3000 PSI, NORMAL WT CONC.	3 3- 1 3/4" x 12" LVL GRIDER, CONTINUOUS OVER CENTER SUPPORT.
2 3'-0" x 3'-0" x 1'-0" DEEP FOOTING w/ 4- #4s @ BOTTOM, EACH WAY, 3000 PSI, NORMAL WT CONC.	4 2- 1 3/4" x 16" LVL, CONTINUOUS, x ± 28'-0" LONG.
3 3" DIA STANDARD PIPE COLUMN, 1/2"x9" PLATE w/ 4- 1/2" DIA x 6" LONG EXPANSION BOLTS.	5 3- 1 3/4" x 16" LVL, CONTINUOUS, x ± 16'-0" LONG.
4 3/8" x 1/4" x 12" LONG x 12" HIGH SADDLE PLATE w/ 4- 1/2" DIA THRU BOLTS INTO WOOD BEAM.	6 2- 1 3/4" x 18" LVL, HEADER x 16'-9" LONG.
5 3" DIA STANDARD PIPE COLUMN, 1/2"x9" BASE PLATE w/ 4- 1/2" DIA x 6" LONG EXPANSION BOLTS.	7 3- 2x4 JACK STUDS + 2- 2x4 KING STUDS EA. END.
6 3/8" x 6" x 8" LONG x 8" HIGH SADDLE PLATE w/ 2- 1/2" DIA THRU BOLTS INTO WOOD BEAM.	8 2- 2x4 JACK STUDS + 1- 2x4 KING STUDS EA. END.
7 4- 2x6 STUD POST, FACE NAIL EA. OF STUD w/ 16d NAILS, 2 ROWS @ 16" O.C.	9 3- 2x4 JACK STUDS + 1- 2x4 KING STUDS EA. END.
8 5 1/4" x 5 1/4" PSL COLUMN	
9 2- 1 3/4" x 12" LVL HEADER ± 12'-0" LONG. 2- 2x4 JACK STUDS + 1- 2x4 KING STUD EA. END.	

GENERAL NOTES:

- ALL INTERIOR DOORS TO BE INSTALLED @ 6" FROM ADJACENT WALLS WHENEVER POSSIBLE.
- HOT WATER HEATERS TO BE PLACED IN ATTIC OR UPPER LEVEL MECH. ROOM.

Square Footage UNIT 'B'	
FIRST FLOOR	= 1,004 sq.ft.
SECOND FLOOR	= 1,367 sq.ft.
THIRD FLOOR	= 847 sq.ft.
TOTAL HEATED	= 3,218 sq.ft.
GARAGE	= 455 sq.ft.
TOTAL	= 3,673 sq.ft.

FRAMING SCHEDULE	
FIRST FLOOR:	2x4 STUDS @ 12" O.C.
ALL OTHER FLRS:	2x4 STUDS @ 16" O.C.



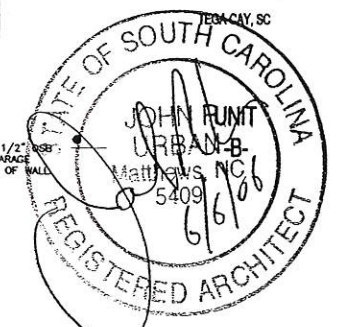
7 Remove Columns

42" cherry

40



These drawings are an instrument of service provided by Urban Architectural Group, P.A.  
© 2006 URBAN ARCHITECTURAL GROUP P.A.  
All rights reserved. Unauthorized reproduction prohibited.



DATE:	5 JUNE 2006
PROJECT NO.:	2530
ISSUE FOR:	PERMIT & CONSTRUCTION
DATE:	5 JUNE 2006

A1.2