

BUM-40

STRUCTURAL NOTES (FOR UNIT 'B' ONLY)	
1. 2'-6" x 2'-6" x 1'-0" DEEP FOOTING w/ 3- #4s @ BOTTOM, EACH WAY, 3000 PSI, NORMAL WT CONC.	6. 3- 1 3/4" x 12" LVL GIRDER, CONTINUOUS OVER CENTER SUPPORT.
2. 3'-0" x 3'-0" x 1'-0" DEEP FOOTING w/ 4- #4s @ BOTTOM, EACH WAY, 3000 PSI, NORMAL WT CONC.	7. 2- 1 3/4" x 16" LVL CONTINUOUS, x ± 28'-0" LONG.
3. 3" DIA STANDARD PIPE COLUMN, 1/2"x9"x9" PLATE w/ 4- 1/2" DIA x 6" LONG EXPANSION BOLTS, 3/8"x5 1/4"x3" LONG x 12" HIGH SADDLE PLATE w/ 4- 1/2" DIA THRU BOLTS INTO WOOD BEAM.	8. 3- 1 3/4" x 16" LVL CONTINUOUS, x ± 16'-0" LONG.
4. 3" DIA STANDARD PIPE COLUMN, 1/2"x9"x9" BASE PLATE w/ 4- 1/2" DIA x 6" LONG EXPANSION BOLTS, 3/8" x 6" x 8" LONG x 8" HIGH SADDLE PLATE w/ 2- 1/2" DIA THRU BOLTS INTO WOOD BEAM.	9. 2- 1 3/4" x 18" LVL HEADER x 16'-9" LONG.
5. 1/4" x 5 1/4" PSL COLUMN.	10. 3- 2x4 JACK STUDS + 2- 2x4 KING STUDS EA. END.
	11. 2- 2x4 JACK STUDS + 1- 2x4 KING STUDS EA. END.
	12. 2x4 JACK STUDS + 1- 2x4 KING STUDS EA. END.

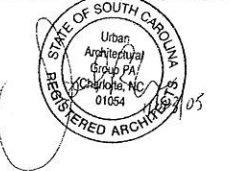
FRAMING SCHEDULE
FIRST FLOOR: 2x4 STUDS @ 12" O.C.
ALL OTHER FLRS: 2x4 STUDS @ 16" O.C.

- GENERAL NOTES:
- ALL INTERIOR DOORS TO BE INSTALLED @ 6" FROM ADJACENT WALLS WHENEVER POSSIBLE.
 - HOT WATER HEATERS TO BE PLACED IN ATTIC OR UPPER LEVEL MECH. ROOM.

Square Footage	UNIT 'B'
FIRST FLOOR	= 1,004 sq.ft.
SECOND FLOOR	= 1,367 sq.ft.
THIRD FLOOR	= 847 sq.ft.
TOTAL HEATED	= 3,218 sq.ft.
GARAGE	= 455 sq.ft.
TOTAL	= 3,673 sq.ft.



These drawings are an instrument of service provided by Urban Architectural Group, PA.
 © 2005 URBAN ARCHITECTURAL GROUP P.A.
 All rights reserved. Unauthorized Reproduction Prohibited.

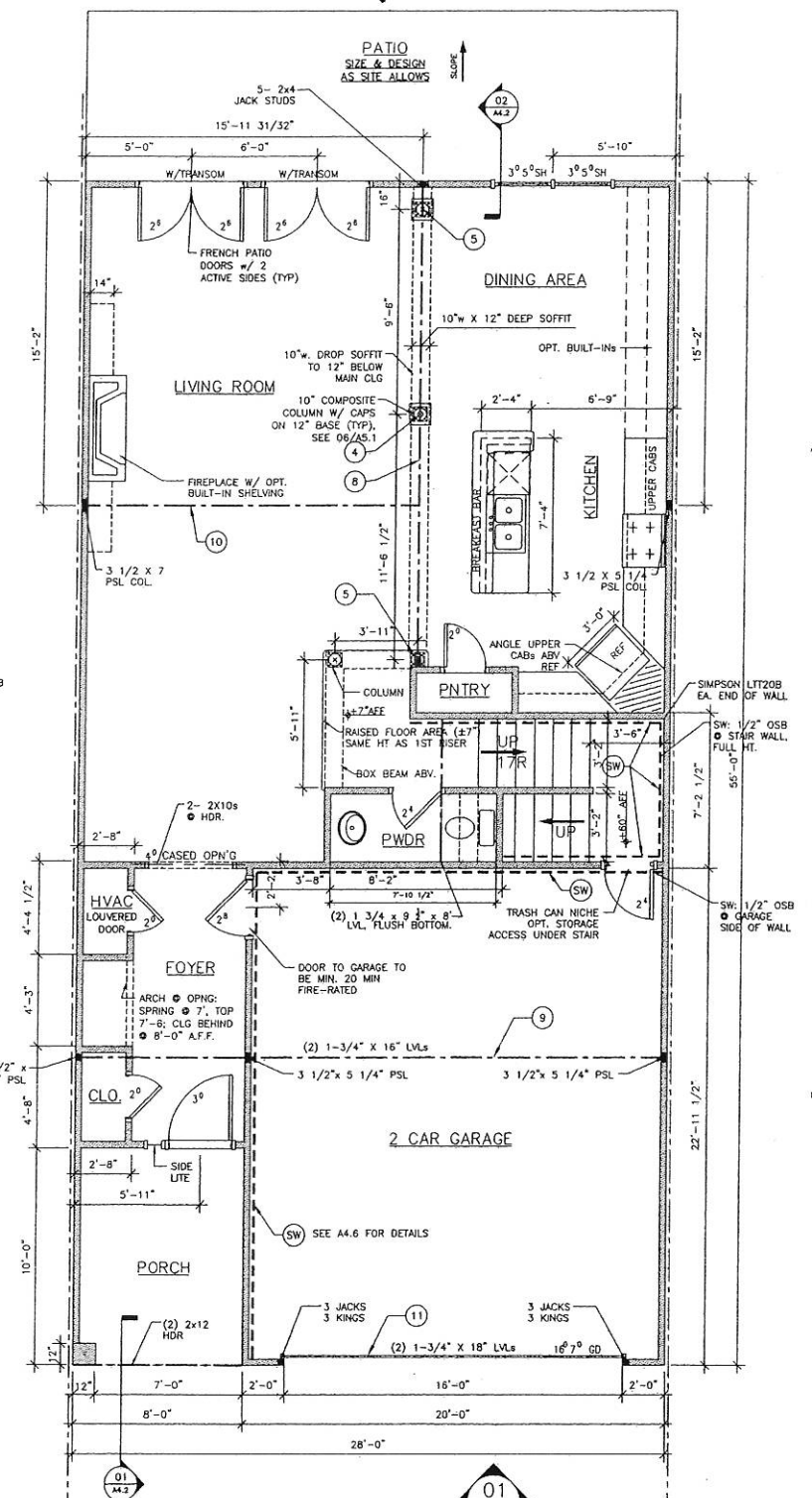
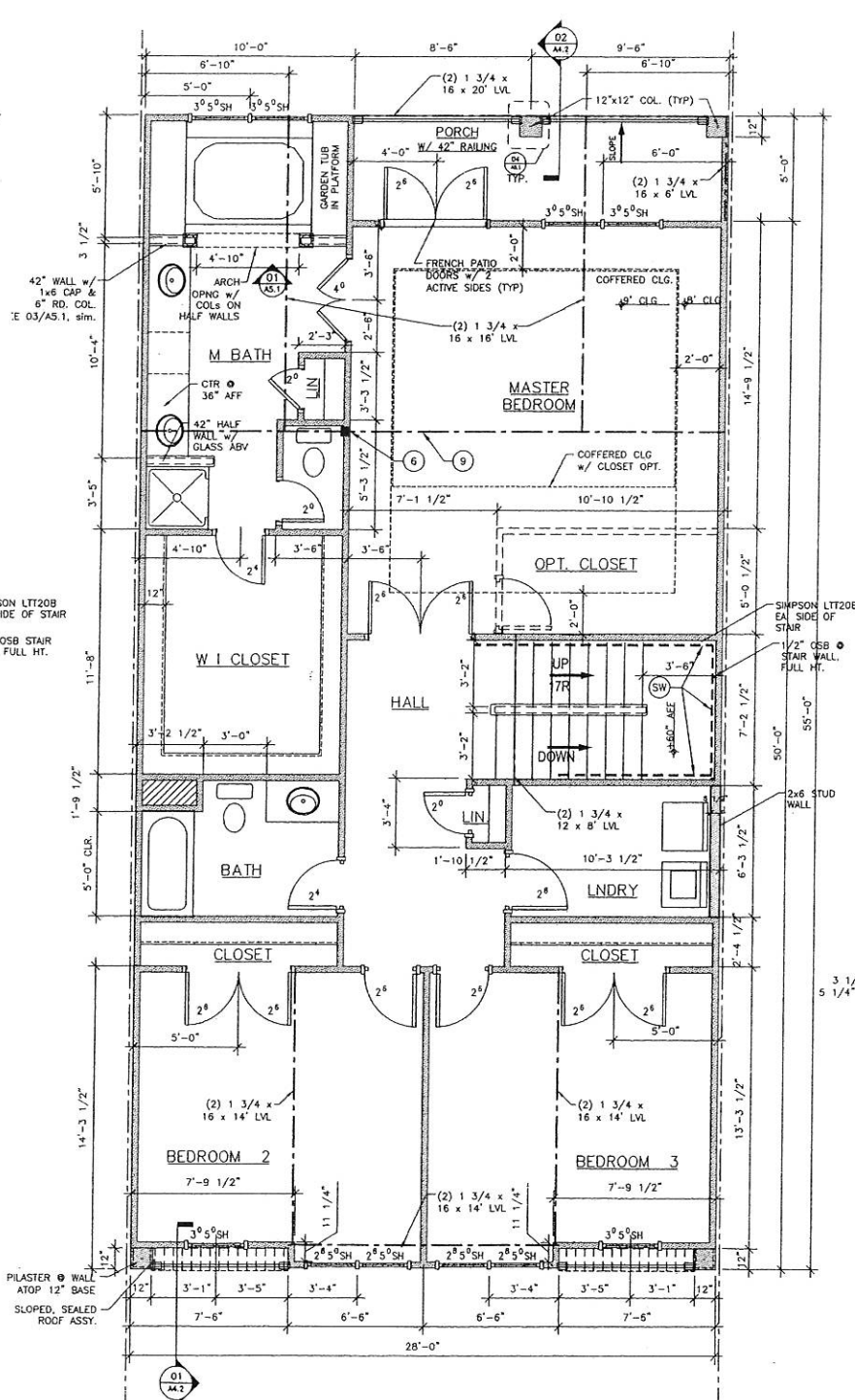
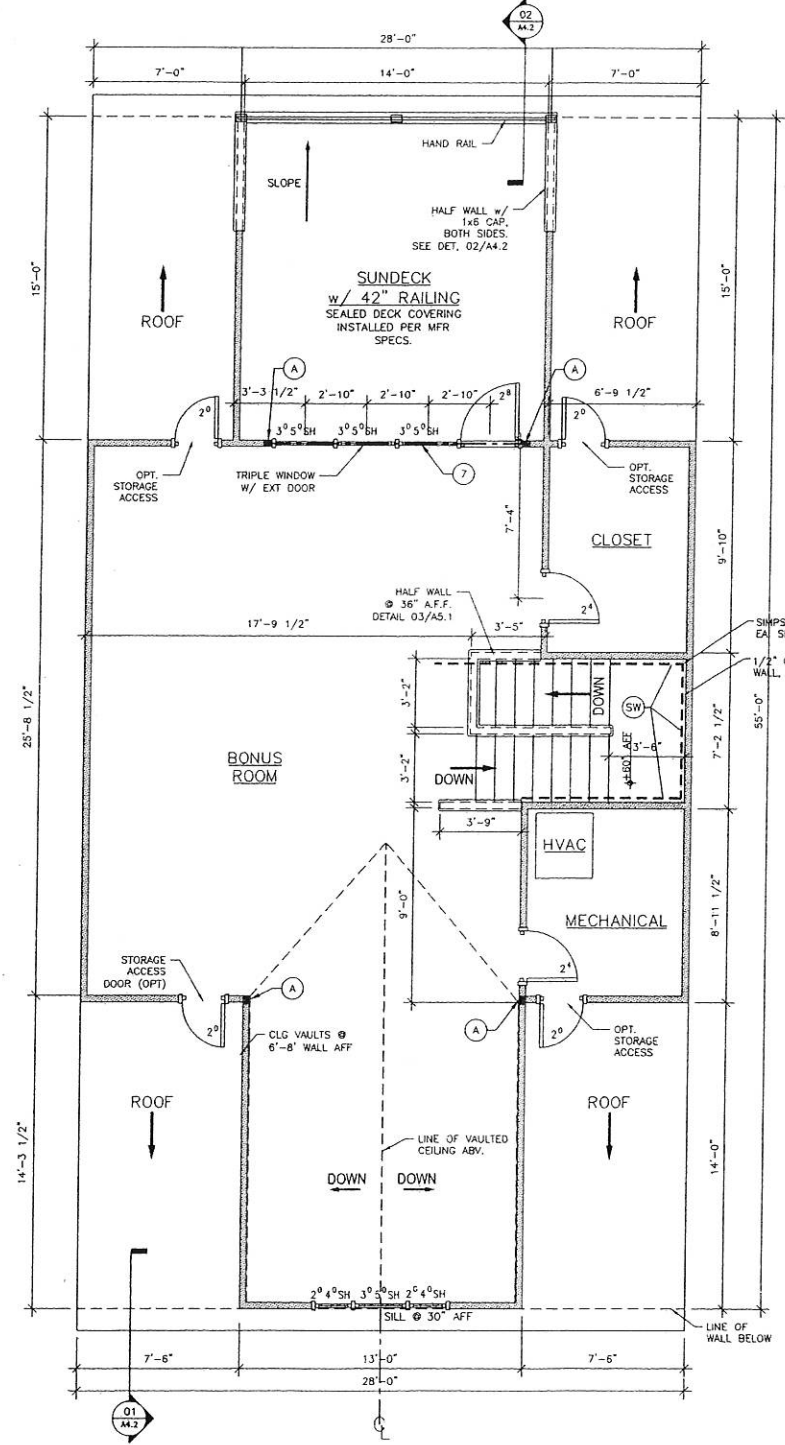


LAKE SHORE TOWN HOMES

TEGA CAY, SC
 UNIT -B-



DATE ISSUED:	8 SEPTEMBER 2005
PROJECT NO.:	2530
ISSUED FOR:	PERMIT & CONSTRUCTION
ISSUE DATE:	1 OCTOBER 2005



A1.2
 FLOOR PLANS
 UNIT -B-