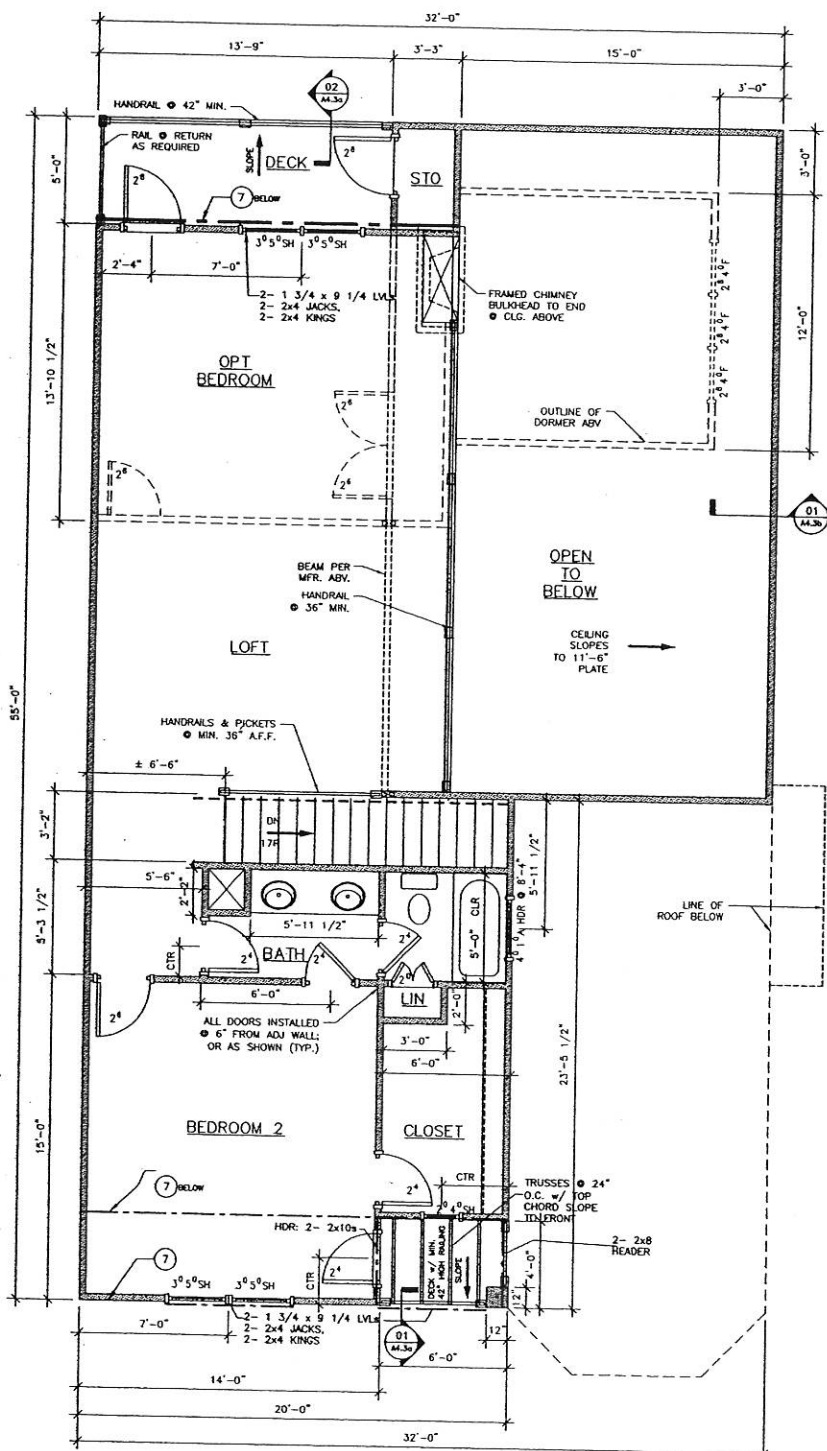


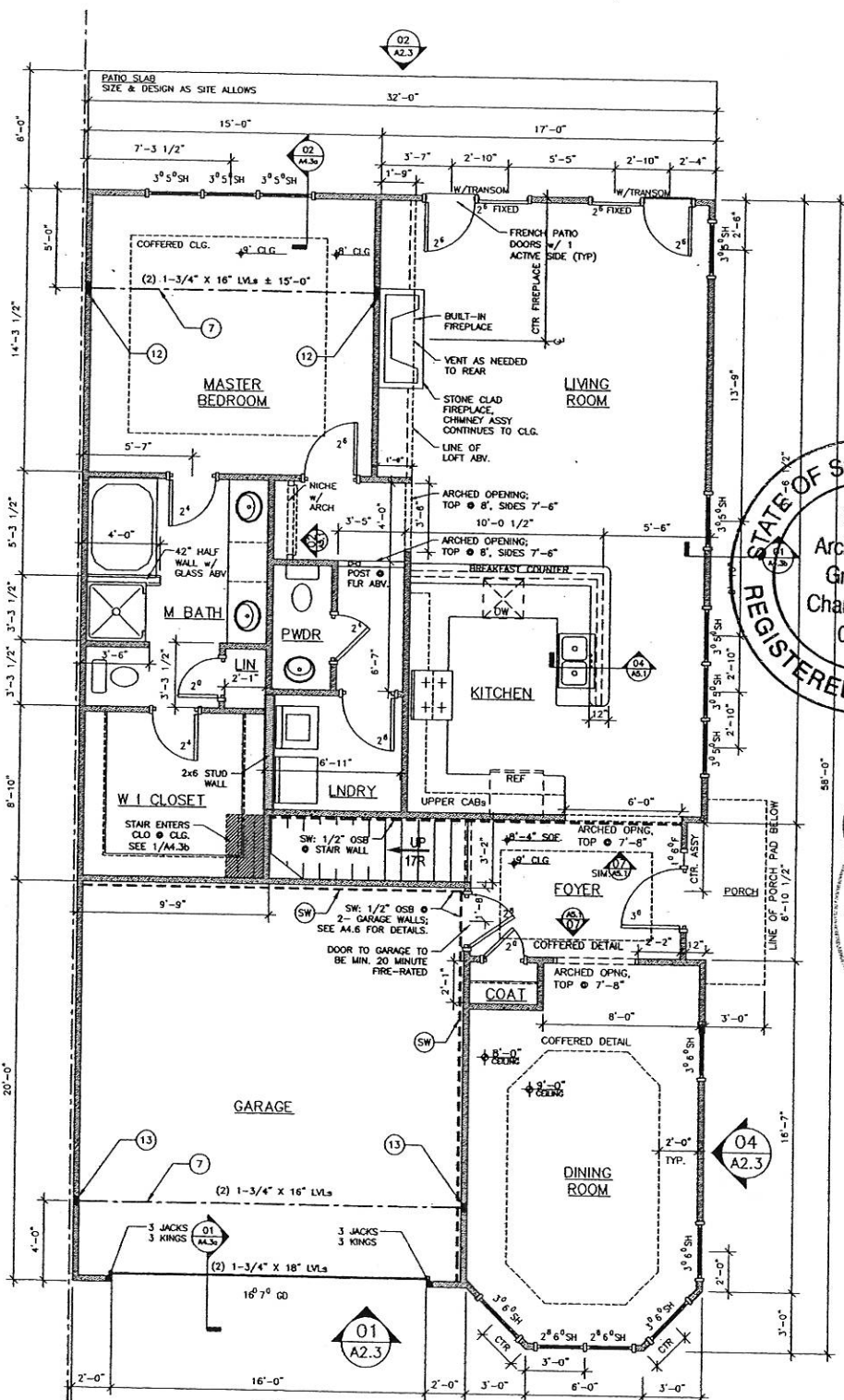
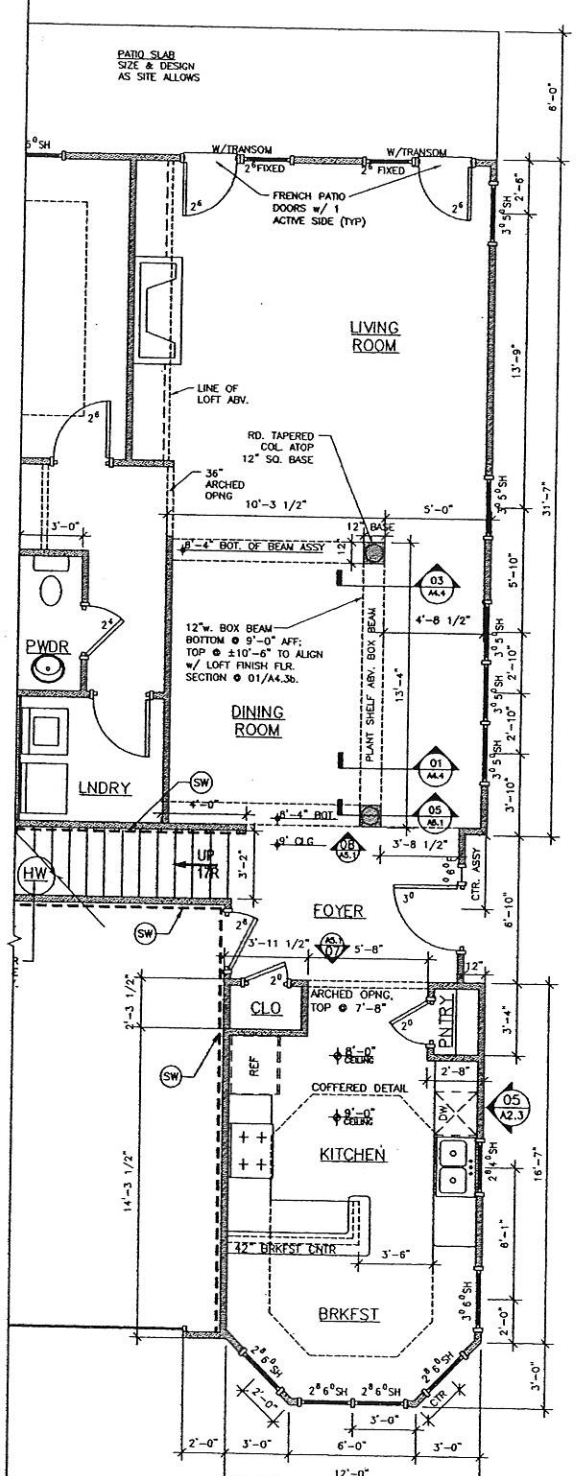
STRUCTURAL NOTES (FOR UNIT 'C' ONLY)	
#	DESCRIPTION:
1	3" DIA. STANDARD PIPE COLUMN 1/2" x 9" base plate w/ 4- 1/2" 6" LONG EXPANSION BOLTS.
2	3/8" x 5 1/4" x 8" LONG x 12" HIGH SADDLE PLATE w/ 4- 1/2" THROUGH BOLTS INTO WOOD BEAM.
3	3'-0" x 3'-0" x 1'-0" DEEP FOOTING w/ 4- #4 BOTTOM EACH WAY, 3000 PSI NORMAL WEIGHT CONCRETE.
4	3" DIA. STD. PIPE COLUMN w/ 1/2" x 9" BASE PLATE w/ 4- 1/2" 6" LONG EXPANSION BOLTS.
5	3/8" x 5 1/4" x 8" LONG x 12" HIGH SADDLE PLATE w/ 4- 1/2" DIA. THRU BOLTS INTO WOOD BEAM.
6	3- 1 3/4" x 12" LVL GRIDER, CONTINUOUS OVER CENTER SUPPORT.
7	2'-6" x 2'-6" x 1'-0" DEEP FOOTING w/ 3- #4 @ BOTTOM, EACH WAY, 3000 PSI, NORMAL WT CONC.
8	4- 2x6 STUD POST, FACE NAIL EA. 2x4 STUD TO THE NEXT STUD w/ 16d NAILS, 2 ROWS @ 16" O.C.
9	2- 1 3/4" x 16" LVL, CONTINUOUS, 20' ± LONG. (LENGTH VARIES)
10	3- 1 3/4" x 16" LVL CONTINUOUS, x ± 16'-0" LONG.
11	2- 1 3/4" x 12" LVL HEADER x 12'-0" ± LONG.
12	2- 2x4 JACK STUDS + 1- 2x4 KING STUD EA. END.
13	5 1/4" x 5 1/4" PSL COLUMN.
14	2- 1 3/4" x 14" LVL HEADER x 16'-9" LONG.
15	3- 2x4 JACK STUDS + 2- 2x4 KING STUDS EA. END.
16	3 1/2" x 7" PSL COLUMN.
17	3 1/2" x 5 1/4" PSL COLUMN.
18	3- 2x4 STUD POST.
19	3 1/2" x 3 1/2" PSL COLUMN.
20	2- 1 3/4" x 11 1/4" LVL BEAM.
21	2- 2x12 BEAM.
22	4- 1 3/4" x 16" LVL x 25'-0" ± LONG.
23	2- 2x4 JACK STUD + 1- 2x4 KING STUD.



FRAMING SCHEDULE
FIRST FLOOR: 2x4 STUDS @ 12" O.C.
ALL OTHER FLRS: 2x4 STUDS @ 16" O.C.

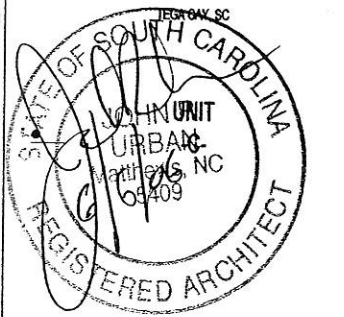
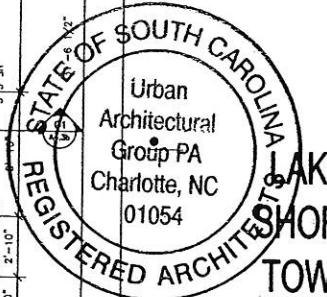
- GENERAL NOTES:**
- ALL INTERIOR DOORS TO BE INSTALLED @ 6" FROM ADJACENT WALLS WHENEVER POSSIBLE.
 - HOT WATER HEATERS TO BE PLACED IN ATTIC OR UPPER LEVEL MECH. ROOM.

Square Footage
FIRST FLOOR = 1,386 sq.ft.
SECOND FLOOR = 854 sq.ft.
TOTAL HEATED = 2,240 sq.ft.
GARAGE = 394 sq.ft.
TOTAL = 2,634 sq.ft.



1242 Mann Drive, Suite 200
Matthews North Carolina 28105
www.urbanarchitecturalgroup.com
P:704.841.8899 F:704.841.8440

These drawings are an instrument of service provided by Urban Architectural Group, PA.
© 2006 URBAN ARCHITECTURAL GROUP P.A.
All rights reserved. Unauthorized Reproduction Prohibited.



DATE DRAWN	5 JUNE 2006
PROJECT NO.	2530
ISSUED FOR	PERMIT & CONSTRUCTION
	5 JUNE 2006

A1.3