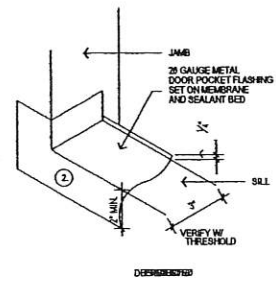
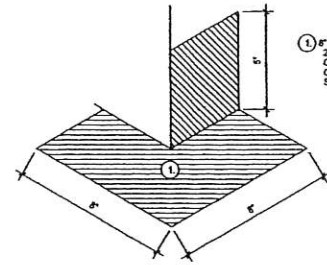


1 WALL FLASHING AT ALL WALLS ADJACENT TO BALCONY DOOR.

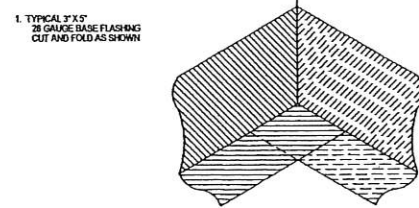


2 GALVANIZED DOOR POCKET FLASHING AT ALL DOOR OPENINGS.

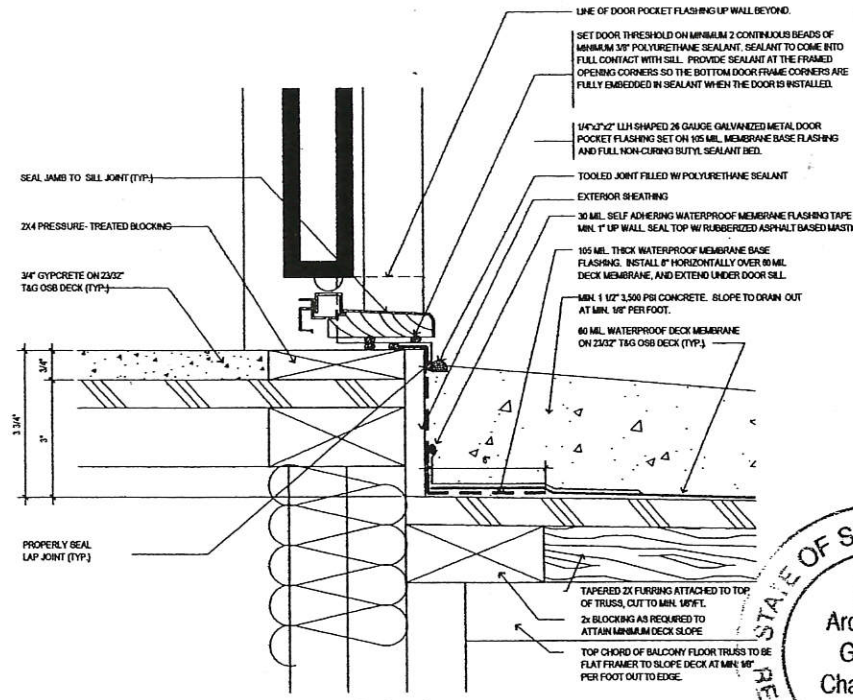
NOTE: PRIME ALL SUBSTRATES PRIOR TO ADHERING ANY FLASHING.



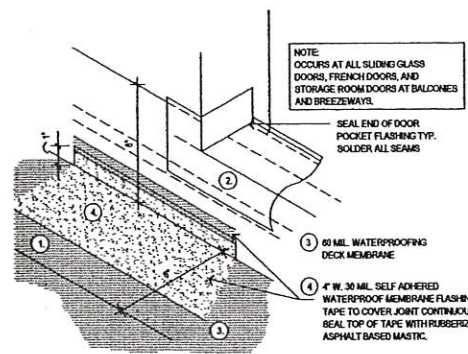
3 FLASHING DETAIL @ OUTSIDE CORNER (METAL FLASHING CONDITION) SCALE: 3" = 1'-0"



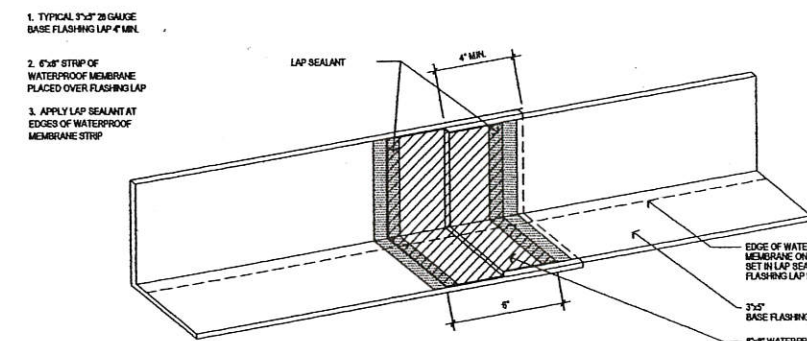
4 FLASHING DETAIL @ INSIDE CORNER (METAL FLASHING CONDITION) SCALE: 3" = 1'-0"



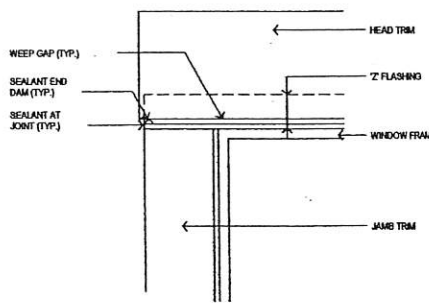
6 WALL FLASHING AT DOOR SCALE: 6" = 1'-0"



5 FLASHING @ DOOR OPENING SCALE: 3" = 1'-0"

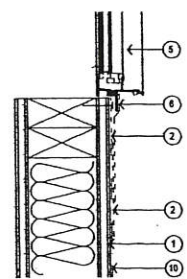


4 FLASHING LAP (METAL FLASHING CONDITION) SCALE: 3" = 1'-0"



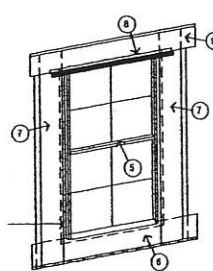
3 (TYP.) WINDOW ELEVATION DETAIL SCALE: 3" = 1'-0"

APPLY SHEATHING TO WALL FRAMING AS SHOWN ON STRUCTURAL DRAWINGS.
 ATTACH 6" WIDE SELF-ADHERING RUBBERIZED FLASHING WITH THE TOP EDGE EVEN WITH THE TOP EDGE OF THE SILL. FLASHING TO EXTEND 12" BEYOND EACH JAMB MINIMUM. ATTACH WITH GALVANIZED JOINTING NAILS TO THE TOP EDGE ONLY, LEAVING BOTTOM LOOSE. DO NOT REMOVE BACKING.
 APPLY 6" SELF-ADHERING RUBBERIZED UPBALT FLASHING TAPE TO EACH JAMB START AT THE BOTTOM OF THE SILL FLASHING AND EXTEND 6" ABOVE WINDOW HEAD.
 APPLY 6" SELF-ADHERING RUBBERIZED UPBALT FLASHING TAPE OVER FLANGE AT HEAD. EXTEND 12" BEYOND EACH JAMB.



2 WINDOW FLASHING WITH BUILDING PAPER ON WALL (BUILDING GLASS DOORS ARE TO BE WATERPROOFED IN THIS SAME MANNER) NOT TO SCALE

5. SET THE WINDOW AS PER THE WINDOW MANUFACTURER'S RECOMMENDATIONS.
 6. APPLY 6" SELF-ADHERING RUBBERIZED ASPHALT FLASHING TAPE OVER FLANGE AT SILL. EXTEND TO END OF SILL FLASHING.
 7. APPLY 6" SELF-ADHERING RUBBERIZED ASPHALT FLASHING TAPE OVER FLANGE AT JAMBS. START 6" BELOW SILL AND EXTEND UP TO 6" ABOVE WINDOW FLANGE AT HEAD.
 8. INSTALL GALVANIZED 2" FLASHING AT WINDOW HEAD AND EXTEND TO BE THE LENGTH OF THE HEAD TRIM.



9. APPLY 6" SELF-ADHERING RUBBERIZED ASPHALT FLASHING TAPE OVER FLANGE AT HEAD AND OVER 2" FLASHING. EXTEND MIN. 12" BEYOND EACH JAMB.
 10. INSTALL BUILDING PAPER STARTING FROM THE BASE OF THE BUILDING. INSTALL SINGLE FASHION WITH MINIMUM 4" VERTICAL OVERLAPS AND 6" HORIZONTAL OVERLAPS. ATTACH BUILDING PAPER TO WOOD FRAME WITH GALVANIZED STAPLES. INSTALL BUILDING PAPER UNDER SILL FLAP SHOWN IN STEP TWO. BUILDING PAPER TO OVERLAP ALL WINDOW FLANGES AND GALVANIZED 2" FLASHING AT ALL WINDOWS.
 11. SLIP BOTTOM OF JAMB AND SILL FLASHING OUT OVER THE BUILDING PAPER.
 12. TAPE OVER ANY CUTS OR HOLES IN THE BUILDING PAPER.
 13. PROVIDE SEALANT END DAMS AT THE ENDS OF THE 2" FLASHING TYPICAL 2" FLASHING TO SLOPE AWAY FROM BUILDING.
 *REFER ALSO TO DOOR AND WINDOW DETAILS.

WALL/WINDOW/DOOR WATERPROOFING SPECIFICATIONS:

- OWNER SHALL RETAIN THE SERVICES OF A QUALITY ASSURANCE CONSULTING FIRM, SPECIALIZING IN THE AREA OF WATERPROOFING, FOR THE SOLE PURPOSE OF INSPECTING FLASHINGS BEFORE COVERED WITH FINISHED MATERIALS. DETERMINATION OF PROPER FLASHING TECHNIQUES CAN BE UTILIZED VIA THE BLDG. MOCK UP PANELS AS DESCRIBED ON A3.1
- GO TO PROVIDE DETAILED SHOP DRAWINGS INDICATING EACH FLASHING AND EDGE DETAIL AND ATTACHMENT REQUIREMENTS.
- USE STAINLESS STEEL FASTENERS WHEN FASTENING INTO TREATED LUMBER.
- ALUMINUM 2" FLASHING & THRU WALL FLASHING SHALL BE .025" FOR CONCEALED AND .032" FOR EXPOSED.
- MINIMUM 40 MIL POLYETHYLENE BUTYL RUBBER "PEEL AND STICK WATERPROOFING" MIN. 240 DEGREE SOFTENING POINT
- 6" & 9" SELF ADHERING RUBBERIZED ASPHALT FLASHING TAPE - (WINDOW WRAP) MIN. 20 MIL THICKNESS MEETING THE FOLLOWING REQMTS: FEDERAL SPECIFICATION UU-B-790a TYPE I, GRADE A, STYLE 4. TYVEK PRODUCTS OR EQUAL.
- SEALANT FOR DISSIMILAR MATERIAL JOINTS - SONNEBORN NPI POLYURETHANE SEALANT OR EQUAL (EXCEPT AT WOOD).
- SEALANT FOR WOOD TO WOOD JOINTS AND WOOD TO DISSIMILAR MATERIAL JOINTS - SILICON ACRYLIC SEALANT.
- SEALANT UNDER DOOR THRESHOLDS - SONNEBORN NPI POLYURETHANE SEALANT OR EQUAL.
- ALL SEALANT BEADS AND FILLETS TO BE CONTINUOUS.
- ALL METAL FLASHINGS ARE TO HAVE ALL OVERLAPS SEALED WITH NON-CURING BUTYL SEALANT OR POLYURETHANE SEALANT.
- PAIN INTERIOR GYPSUM BOARD WINDOW JAMES WITH ENAMEL PAINT.
- SET NAILS AT ALL DOOR TRIM.
- EXTERIOR WOOD TRIM IS TO BE PRE-PRIMED KDAT MATERIAL.

NOTE: TYVEK COMMERCIAL BUILDING SPECIALISTS CAN BE CONTACTED FOR FREE FIELD/INSTALLATION SERVICES @ TIME OF CONSTRUCTION. CONTACT: ANDREW ANDRETTA, CS 704.226.2864



1242 Main Drive, Suite 200
 Matthews, North Carolina 28105
 www.urbanarchitecturalgrp.com
 P: 704.841.1899 F: 704.841.8440

These drawings are an instrument of service provided by Urban Architectural Group, P.A.
 © 2006 URBAN ARCHITECTURAL GROUP P.A.
 All rights reserved. Unauthorized reproduction prohibited.



LAKE SHORE TOWN HOMES
 TEGA CAY, SC



DATE DRAWN: June 05, 2006
 PROJECT NO.: 2530
 ISSUED FOR: PERMIT & CONSTRUCTION
 5 JUNE 2006