



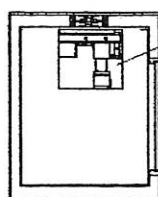
DETAILS FOR LEV ELEVATOR ONLY.

- All other Manufacturers will have their own details and installation plans.
- For additional details on the installation of LEV elevators in this project, refer to LEV manuals or to their website, thelev.com.

Hoistway Construction Notes:

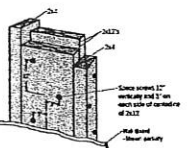
- A load bearing wall is required to sustain rail reactions. See Detail 3 this sheet, Rail Reactions and Guide Rail Backing Construction below.
- All points of the pit floor must be a minimum of 6" below the lower landing finished floor. (12" if optional buffer springs are used).
- Pit floor construction should withstand a 3200 lb. impact load.
- Hoistway sizes reflect running and access clearances only.
- Minimum overhead clearance is 8'-6" above the top landing finished floor or 8'-0" for hydraulic drive when controller is installed in the machine room. (Optional 88" car height requires 8'-10", 94" car height requires 9'-4").
- Due to limited clearances, it is imperative that the walls be square and plumb throughout the hoistway. The finished hoistway must be within 1/4" tolerances from top to bottom.
- Hoistway door not provided by elevator manufacturer. 3'-0" x 6'-8" door recommended.
- Hoistway is required to be free of all pipes, wiring and obstructions not related to the operation of the elevator.
- Service access hatch is required in the controller / drive assembly area. See detail 4 this sheet for recommended location.
- Building structure must provide for a means of a chain hoist for hoisting rail and elevator materials to the top of the hoistway during installation.

Attic Plan View of Service Access Hatch



- 18" x 24" minimum hatch opening above the controller and drive assemblies.
- This is the recommended location of the access hatch. If sufficient attic space is not available, access through a wall must be provided. Cannot be on the rail wall (contact factory for alternatives).
- Construction of access hatch and door is not provided by mfr.
- Door needs to be self closing and lockable.

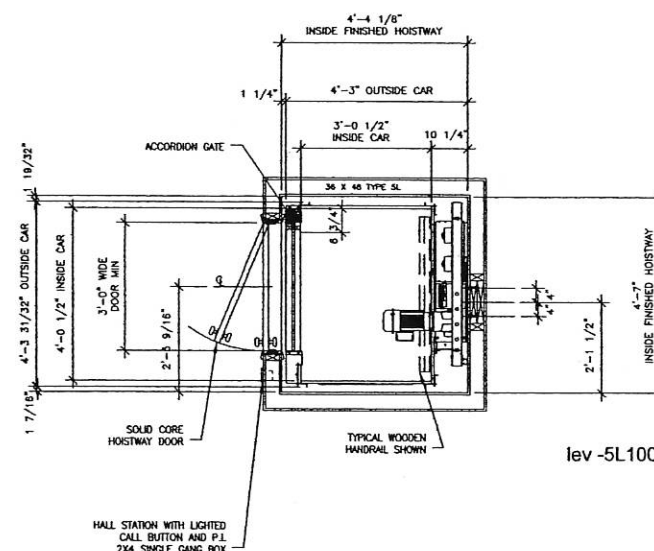
04 DETAILS- Service Access @ Attic
 N T S



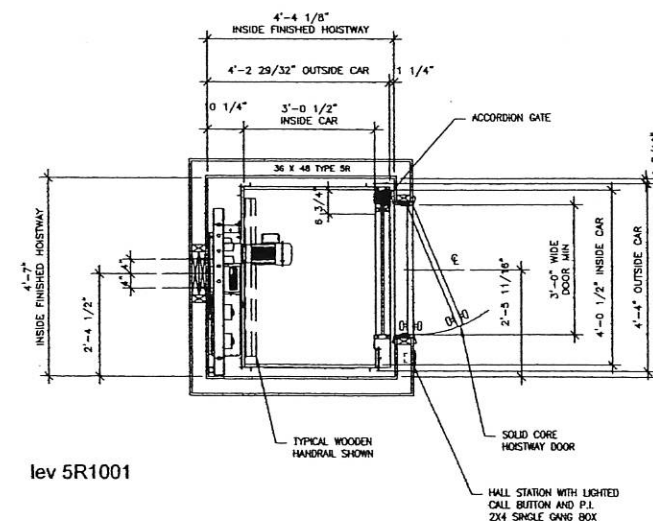
Guide Rail Backing Construction Details:

- Wall Board (Shown partially in this view)
- Splice screws 12" vertically and 3" on each side of centerline of 2x12
- Laminate (2) 2x12's and (2) 2x4's with glue and #8 x 2 1/4" wood screws (minimum).
- Overlap joints of the lumber as necessary for structural rigidity.
- Guide rail backing must be tied to a horizontal structural member (header or floor plate) at top, bottom and a maximum of 10' between.

03 DETAILS- Guide Rail Backer Rail
 N T S



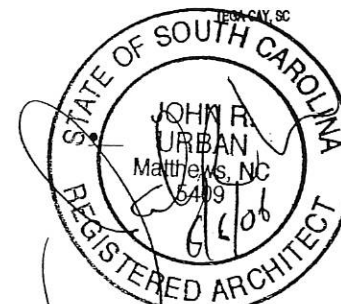
02 DETAIL - LEV Elevator, left hand door.
 1/2" = 1'-0" (1/4" = 1'-0" if on 11x17)



01 DETAIL - LEV Elevator, right hand door.



LAKE SHORE TOWN HOMES



DATE DRAWN: 5 JUNE 2006
 PROJECT NO.: 2530
 ISSUED FOR: PERMIT & CONSTRUCTION
 5 JUNE 2006