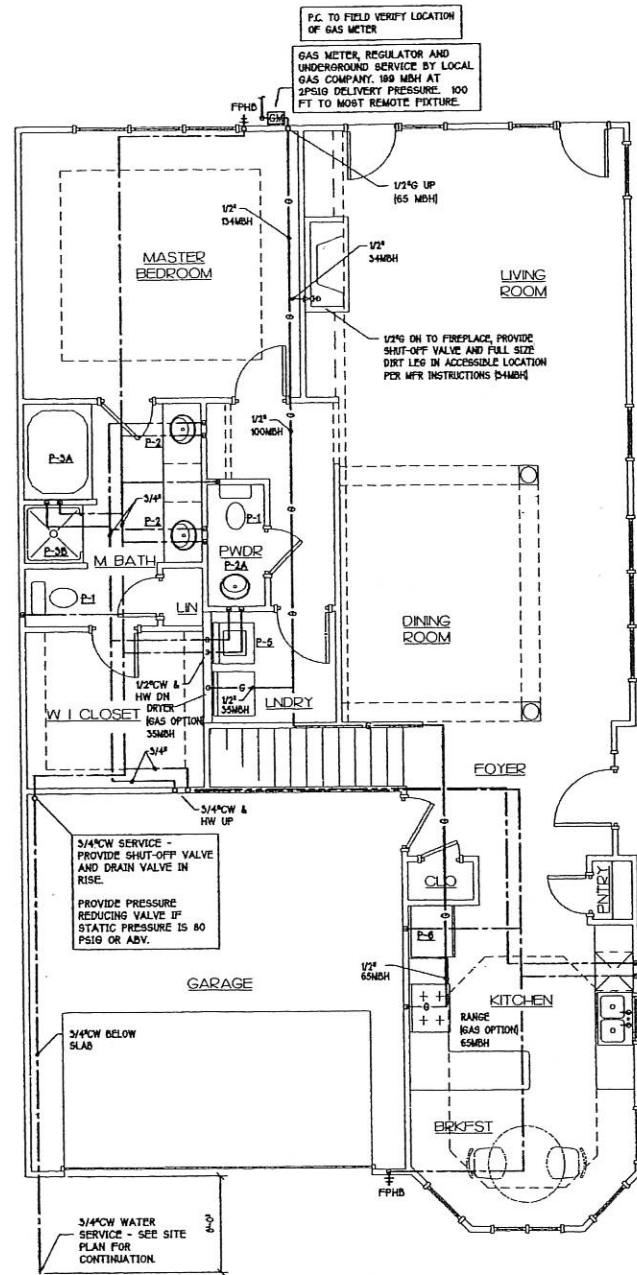
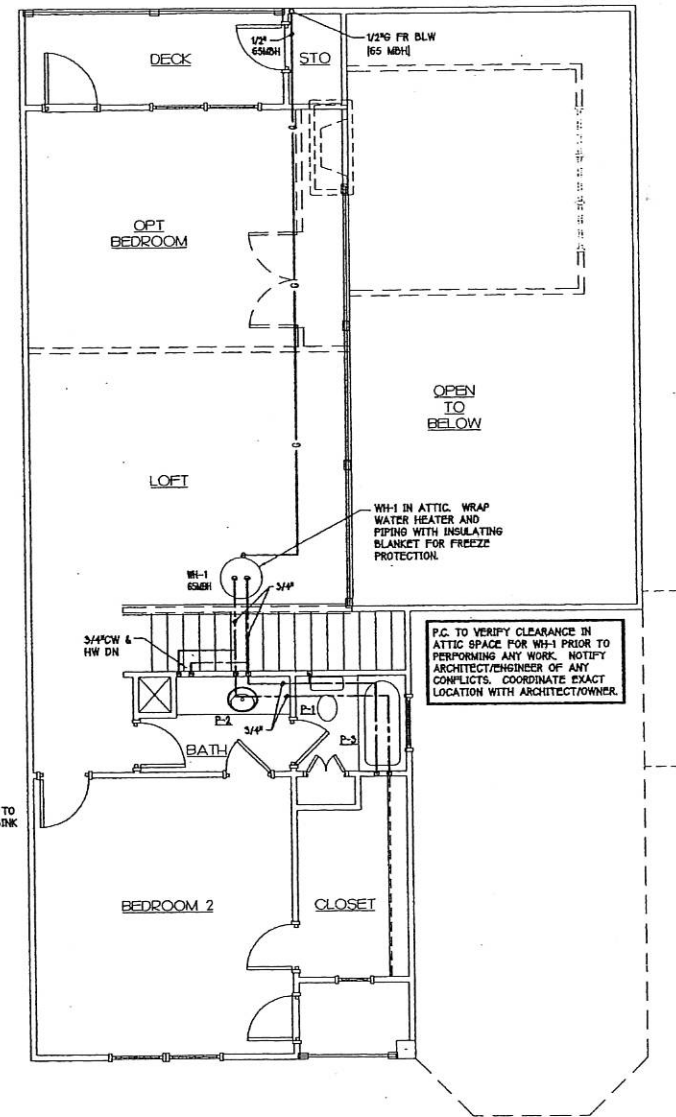


1 FIRST FLOOR 2 STORY UNIT WATER & GAS PLAN  
1/4" = 1'-0"



2 FIRST FLOOR 2 STORY UNIT (ALT) WATER & GAS PLAN  
1/4" = 1'-0"



3 SECOND FLOOR 2 STORY UNIT WATER & GAS PLAN  
1/4" = 1'-0"

**PLUMBING NOTES FOR UNIT PLANS:**

- SEE SHEET P8 FOR FIXTURE SCHEDULE & CONNECTION SIZES.
- ALL WATER SUPPLY LINES IN AN EXTERIOR WALL SHALL BE RUN ON INTERIOR SIDE OF WALL INSULATION.
- PROVIDE SHUT-OFF VALVE IN EACH UNIT IN AN ACCESSIBLE LOCATION THAT CONTROLS ALL WATER SUPPLY TO THAT UNIT.
- ALL WATER PIPING IS 1/2" UNLESS OTHERWISE NOTED.
- PROVIDE ALL REQUIRED PLUMBING CONNECTIONS FOR DISHWASHER AND DISPOSAL IN EACH UNIT PER MFR RECOMMENDATIONS.
- PROVIDE CLEANOUT AT THE BASE OF ALL WASTE STACKS.

| GAS LOAD TABLE [2 STORY UNIT]  |   |
|--|---|
| <b>LOW PRESSURE</b><br>PRESSURE DROP: 0.5 IN.W.C.<br>STEEL BCHD. 40I<br>LENGTH: 100 FT<br>FITTINGS FACTOR: 13<br>EQUIVALENT TOTAL LENGTH: 110 FT.<br>CAPACITY OF PIPES IN INCH | <b>HIGH PRESSURE</b><br>ATMOSPHERIC PRESSURE: 14.6954 PSIA<br>PS: 2 PSIG<br>STEEL BCHD. 40I<br>LENGTH: 100 FT<br>FITTINGS FACTOR: 13<br>EQUIVALENT TOTAL LENGTH: 110 FT.<br>CAPACITY OF PIPES IN INCH |
| 1/2" 45  | 1/2" 44   |
| 3/4" 84  | 3/4" 87   |
| 1" 177   | 1" 177  |
| 1-1/4" 363   | 1-1/4" 363  |
| 1-1/2" 514   | 1-1/2" 514  |
| 2" 1047  | 2" 1047   |
| 2-1/2" 1668  | 2-1/2" 1668   |

NOTE:  
GAS PIPING IS SIZED FOR 2PSI CONTRACTOR SHALL PROVIDE AN ALTERNATE BID FOR LOW PRESSURE PIPING.  
CONTRACTOR SHALL VERIFY THE AVAILABILITY OF 2PSI SERVICE BEFORE ANY WORK HAS BEGAN AND NOTIFY ARCHITECT IN WRITING OF AVAILABLE SERVICE.



© 2004 URBAN ARCHITECTURAL GROUP P.A.



LAKE SHORE TOWN HOMES

Tega Cay, South Carolina

DATE: 06/09/05  
PROJECT NO: 2530  
SHEET NO: Permit & Construction: