

- ### PLUMBING GENERAL NOTES
- FURNISH ALL LABOR, MATERIAL, AND EQUIPMENT REQUIRED FOR THE COMPLETION AND OPERATION OF ALL SYSTEMS IN THIS SECTION OF WORK IN ACCORDANCE WITH ALL APPLICABLE CODES.
 - FURNISH AND INSTALL COMPLETE SYSTEMS OF SOIL, WASTE, AND VENT PIPING FROM ALL PLUMBING FIXTURES, AND/OR OTHER EQUIPMENT.
 - CLEANOUT PLUGS SHALL BE INSTALLED IN ACCORDANCE WITH PLUMBING CODE REQUIREMENTS AT EACH CHANGE IN DIRECTION. CLEANOUTS SHALL BE PLACED IN READILY ACCESSIBLE LOCATIONS.
 - ALL SOIL, WASTE AND VENT LINES SHALL BE CONCEALED IN THE BUILDING CONSTRUCTION.
 - FURNISH AND INSTALL A COMPLETE SYSTEM OF HOT AND COLD WATER, AND WASTE PIPING FROM EXISTING SUPPLIES TO ALL FIXTURES AND/OR EQUIPMENT REQUIRING THIS SERVICE. VERIFY LOCATION OF EXISTING POINTS.
 - COPPER PIPING SHALL BE PROTECTED AGAINST CONTACT WITH MASONRY OR DISSIMILAR METALS. ALL HANGERS, SUPPORTS, ANCHORS, AND CLIPS SHALL BE COPPER OR COPPER PLATED. WHERE COPPER PIPING IS CARRIED ON IRON TRAP/CEILING HANGERS WITH OTHER PIPING, SATISFACTORY AND PERMANENT ELECTROLYTIC ISOLATION MATERIAL SHALL PROTECT THE COPPER AGAINST CONTACT WITH OTHER METALS.
 - WHERE COPPER PIPING IS SLEEVED THROUGH MASONRY, SLEEVES SHALL BE COPPER OR RED BRASS. WHERE COPPER MUST BE CONCEALED IN A MASONRY PARTITION OR AGAINST MASONRY, CONTACT SHALL BE PREVENTED BY COATING THE COPPER HEAVILY WITH ASPHALTIC ENAMEL AND PROVIDING 1/4" ASPHALT SATURATED FELT BETWEEN THE PIPE AND MASONRY.
 - THE PLUMBING CONTRACTOR SHALL COORDINATE CLOSELY WITH THE MECHANICAL AND THE ELECTRICAL CONTRACTORS TO AVOID CONFLICT WITH OTHER TRADES.
 - CEILING AREA HAS LIMITED SPACE. CONTRACTOR MUST COORDINATE WITH OTHER TRADES FOR ALL STRUCTURES, PIPING, CONDUIT, DUCTWORK, LIGHTING, ETC. TO PROPERLY BE INSTALLED.
 - INSULATION IS REQUIRED ON ALL WATER SUPPLY PIPING IN EXTERIOR WALLS, WATER HEATER CLOSET, AND SPRINKLER RISER ROOM AT LEAST 1/2" THICK AS PER SECTION 404.3, VOL. 4, NC806 AND AS APPROVED BY OWNER/ENGINEER.
 - COORDINATE INSTALLATION OF ALL PLUMBING LINES AT CMU WALLS SO THAT PLUMBING LINES ARE PLACED IN WALL DURING CMU WALL CONSTRUCTION. CUTTING AND PATCHING OF CMU WALLS IN PLACE WILL NOT BE PERMITTED.
 - WASTE AND VENT PIPING SHALL BE AS FOLLOWS:
BELOW SLAB: SCHEDULE 40 PVC
ABOVE GROUND: SCHEDULE 40 PVC
 - DOMESTIC WATER PIPING SHALL BE AS FOLLOWS:
BELOW SLAB: PLUMBING PEX PIPING
ABOVE GROUND: PLUMBING PEX PIPING
FOLLOW MFG INSTRUCTIONS FOR INSTALLATION AND OBTAIN APPROVAL FROM LOCAL JURISDICTION PRIOR TO INSTALLATION.
 - ALL COLD AND HOT WATER PIPING INDICATED TO BE RUN ABOVE FINISHED CEILING OR IN EXTERIOR WALL SHALL BE INSTALLED ON THE CONDITIONED SIDE OF THE BUILDING INSULATION.
 - INVERT ELEVATIONS SHALL BE ESTABLISHED AND VERIFIED BEFORE WASTE PIPING IS INSTALLED IN ORDER THAT PROPER SLOPES WILL BE MAINTAINED.
 - VERIFY BACKFLOW PREVENTOR REQUIREMENTS OF LOCAL AUTHORITY AND PROVIDE BACKFLOW PREVENTOR AS REQUIRED. COORDINATE LOCATION WITH OTHER TRADES.
 - VERIFY DOMESTIC WATER METER REQUIREMENTS OF LOCAL AUTHORITY AND PROVIDE DOMESTIC WATER METER AS REQUIRED. COORDINATE LOCATION WITH OTHER TRADES.
 - FIRE STOP ALL PENETRATIONS, BY PIPING OR CONDUITS, OF FIRE RATED WALLS, FLOORS AND PARTITIONS. PROVIDE A DEVICE(S) OR SYSTEM(S) WHICH HAS BEEN TESTED AND LISTED AS COMPLYING WITH ASTM E-814

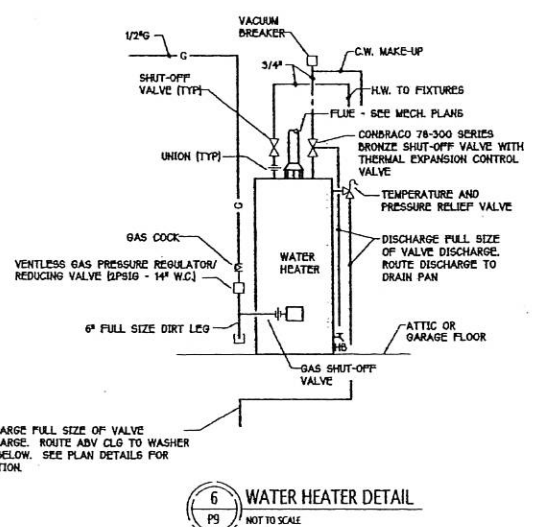
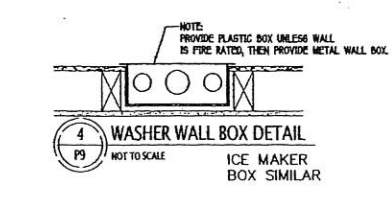
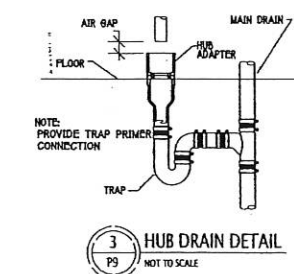
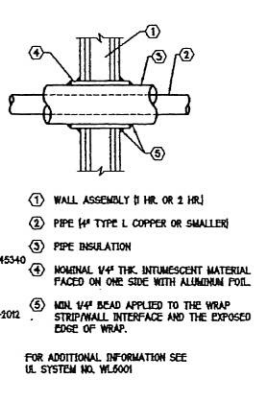
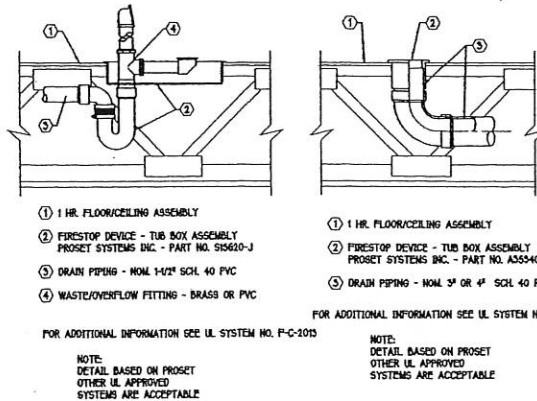
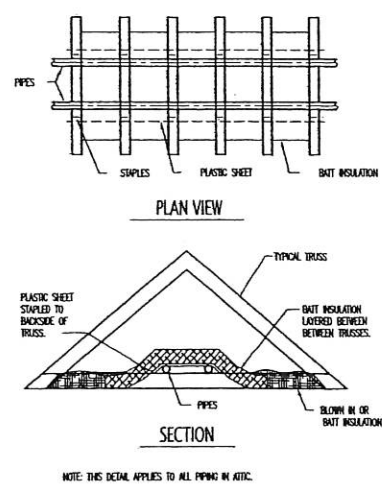
PLUMBING LEGEND

	DOMESTIC COLD WATER PIPING
	100°F DOMESTIC HOT WATER PIPING
	WASTE (SANITARY SEWER)
	GAS PIPING
	VENT PIPING
	GATE VALVE
	BALANCING VALVE
	CHECK VALVE
	PIPE UP
	PIPE DOWN
	PIPE FIXTURE DESIGNATION
A.P.F.	ABOVE FINISHED FLOOR
P.C.	PLUMBING SUB-CONTRACTOR
G.C.	GENERAL CONTRACTOR
M.C.	MECHANICAL SUB-CONTRACTOR
E.C.	ELECTRICAL SUB-CONTRACTOR
F.C.O.	FLOOR CLEAN OUT
W.C.O.	WALL CLEAN OUT
Y.C.O.	YARD CLEAN OUT
F.P.H.	FREEZE PROOF HOSE BIBS
F.D.	FLOOR DRAIN
C.W.	COLD WATER
H.W.	HOT WATER
H.D.	HUB DRAIN

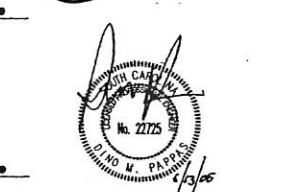
- ### GAS PIPING NOTES
- WORK TO INCLUDE PIPING FROM GAS METERS TO ALL GAS FIRED EQUIPMENT AND THE FINAL CONNECTION.
 - ALL WORK SHALL BE IN ACCORDANCE WITH ALL APPLICABLE LOCAL CODE REQUIREMENTS, AND THE PROVISIONS OF NFPA-54 AND NFPA-58.
 - THE CONTRACTOR SHALL SUPPLY ALL PERMITS AND LICENSES REQUIRED FOR THE WORK, AND FOR ALL INSPECTIONS REQUIRED.
 - PIPE 2" AND SMALLER SHALL BE TRACPIPE AS MFG BY ONEGAFLEX OR EQUAL.
 - VALVES SHALL BE GAS COOKS MANUFACTURED BY NIBCO.
 - ALL GAS PIPING LOCATED UNDER THE FLOOR SLABS SHALL BE INSTALLED IN CONDUIT OR AS REQUIRED BY CODE.
 - PROVIDE DIRT TRAPS AND SHUT-OFF VALVES WITH UNIONS AT EACH CONNECTION TO GAS FIRED EQUIPMENT.
 - ALL PIPING EXPOSED TO THE OUTDOORS OR RUN IN UNCONDITIONED SPACES SHALL BE PAINTED WITH TWO COATS OF RUST RESISTANT ENAMEL.

PLUMBING FIXTURE SPECIFICATIONS AND CONNECTION SCHEDULE

MARK	FIXTURE	TYPE	MANUFACTURER	MODEL NO.	MATERIAL	STYLE	FAUCET/VALVE			DRAIN	PIPE SIZES	MOUNTING	REMARKS		
							SPOUT	HANDLES	CENTERS						
E-1	WATER CLOSET	FLUSH	STERLING	40225	VITREOUS CHINA	STANDARD ELONGATED	—	—	—	—	—	FLOOR	PROVIDE WITH KOHLER KC-4664-O ELONGATED CLOSED FRONT SEAT (NO FLUSHY PLASTIC SEATS ALLOWED)		
E-2	LAVATORY	COUNTER TOP	STERLING	7502040	VIKRELL	COUNTER TOP	STANDARD	SINGLE LEVER	4"	POP-UP	1-1/2"	1-1/2"	COUNTER TOP		
E-2A	LAVATORY	PEDESTAL SINK	STERLING	442428	VITREOUS CHINA	PEDESTAL	STANDARD	TWO LEVER	4"	POP-UP	1-1/2"	1-1/2"	COUNTER TOP		
E-3	TUB AND SHOWER	GARDEN TUBE	STERLING	ENSEMBLE 3660	VIKRELL	GARDEN TUBE	—	SINGLE LEVER	—	CAST INTEGRAL	2"	—	FLOOR	FRONT APRON EXTENDED SPOUT. DELTA RP3896 TUB SPOUTS MUST REACH OUT OVER EDGE OF TUB.	
E-3A	TUB	GARDEN TUBE	STERLING	ENSEMBLE 4260	VIKRELL	GARDEN TUBE	—	SINGLE LEVER	—	CAST INTEGRAL	2"	—	FLOOR	FRONT APRON EXTENDED SPOUT. DELTA RP3896 TUB SPOUTS MUST REACH OUT OVER EDGE OF TUB.	
E-3B	SHOWER	BUILT-IN TYPE	STERLING	ENSEMBLE 3604	VIKRELL	STANDARD SHOWER	—	SINGLE LEVER	—	CAST INTEGRAL	2"	—	FLOOR	FRONT APRON EXTENDED SPOUT. DELTA RP3896	
E-3C	TUB	GARDEN TUBE	ELIER (OR EQUAL)	DAKOTA 4872	HIGH-GLOSS ACRYLIC	GARDEN TUBE	—	SINGLE LEVER	—	CAST INTEGRAL	2"	—	FLOOR		
E-4	SINK	DOUBLE COMP	KOHLER	K-3198-4	STAINLESS STEEL	8" DEEP	—	SINGLE LEVER	8"	CRUMB CUP	1-1/2"	1-1/2"	COUNTER TOP	PROVIDE W/ STRAINER AND SPRAY	
E-5	WASHER BOX	BOTTOM SUPPLY	PLASTIC DOWNTIES	WNB-2VP	—	RECESSED BOX	—	—	—	—	2"	—	RECESSED WALL		
E-6	VALVE BOX	WALL MOUNTED	PLASTIC DOWNTIES	IB-20	PVC	RECESSED BOX	—	—	—	—	—	1/2"	WALL MOUNTED		
PPHB	WALL MOUNTED	FREEZE PROOF	WOODFORD	B67	CAST BRASS	BOX FAUCET	—	LOOSE KEY	—	—	—	1/2"	WALL		
YCO	YARD CLEAN-OUT	ROUND TOP	JOSAM	86040	CAST IRON	BRONZE PLUG	—	—	—	—	—	—	GRADE	PROVIDE WITH 2"x2"x1/4" THK CONCRETE PAD AT GRADE	
F.C.O.	FLOOR CLEAN-OUT	SQUARE TOP	JOSAM	86030	CAST IRON	BRONZE PLUG	—	—	—	—	—	—	FLOOR		
W.C.O.	WALL CLEAN-OUT	ROUND TOP	JOSAM	8880	CAST IRON	BRONZE PLUG	—	—	—	—	—	—	WALL		
P.D.A.	FLOOR DRAIN	SQUARE TOP	JOSAM	30000-5	CAST IRON	NICALOY TOP	—	—	—	CAST IRON	—	—	FLOOR		
WH-1	WATER HEATER	GAS FIRED	STATE	656 65 XRRS	GLASS LINED	RESIDENTIAL GAS	—	—	—	—	—	—	SEE PLAN	SEE DETAIL	65 GAL. STORAGE, 65MBH INPUT, 67MBH RECOVERY AT 100 DEG F
WH-2	WATER HEATER	GAS FIRED	STATE	656 75 XRRS	GLASS LINED	RESIDENTIAL GAS	—	—	—	—	—	—	SEE PLAN	SEE DETAIL	74 GAL. STORAGE, 75MBH INPUT, 85MBH RECOVERY AT 100 DEG F



© 2004 URBAN ARCHITECTURAL GROUP P.A.



LAKE SHORE
TOWN
HOMES

Tega Cay,
South, Carolina

DATE: 06/09/05
PROJECT NO: 2530
ISSUE FOR: Permit & Construction

P9
PLUMBING SCHEDULE,
DETAILS, & NOTES